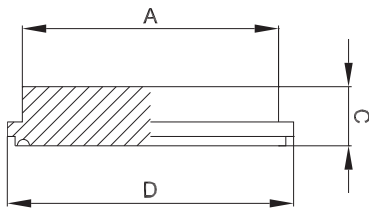




2.1.5 Steril-Blindbundstutzen STERI-Connect®

aseptic blind liner



weitere Abmessungen auf Anfrage | further dimensions on request

zusätzliche Oberflächenqualitäten analog Seite | additional surface qualities analog page 7

DIN	Abmessung dimension	A	C	D			MB 1.4435			
DN006	8.0 x 1.0	8.0	9.0	13.0			705215			
DN008	10.0 x 1.0	10.0	9.0	15.0			705216			
DN010	12.0 x 1.0	12.0	9.0	19.0			700080			
DN010	13.0 x 1.5	13.0	9.0	19.0			709837			
DN015	19.0 x 1.5	19.0	9.0	27.0			700084			
DN020	23.0 x 1.5	23.0	9.0	33.0			700086			
DN025	29.0 x 1.5	29.0	10.0	39.0			700088			
DN032	35.0 x 1.5	35.0	10.0	49.0			700090			
DN040	41.0 x 1.5	41.0	10.0	53.0			700092			
DN050	53.0 x 1.5	53.0	10.0	65.0			700094			
DN065	70.0 x 2.0	70.0	11.0	85.0			700097			
DN080	85.0 x 2.0	85.0	11.0	95.0			700100			
DN100	104.0 x 2.0	104.0	11.0	124.0			700082			

ISO	Abmessung dimension	A	C	D			MB 1.4435			
DN008	13.5 x 1.6	13.5	9.0	19.0			700099			
DN010	17.2 x 1.6	17.2	9.0	23.0			700081			
DN015	21.3 x 1.6	21.3	9.0	27.0			700085			
DN020	26.9 x 1.6	26.9	9.0	33.0			700087			
DN025	33.7 x 2.0	33.7	10.0	39.0			700089			
DN032	42.4 x 2.0	42.4	10.0	49.0			700091			
DN040	48.3 x 2.0	48.3	10.0	53.0			700093			
DN050	60.3 x 2.0	60.3	10.0	65.0			700095			
DN065	76.1 x 2.0	76.1	11.0	85.0			700098			
DN080	88.9 x 2.3	88.9	11.0	95.0			700101			
DN100	114.3 x 2.3	114.3	11.0	124.0			700083			