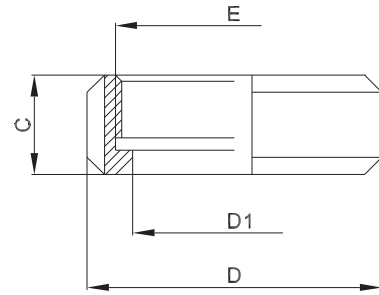




2.1.6 Steril-Nutmutter STERI-Connect®

aseptic nut



weitere Abmessungen auf Anfrage | further dimensions on request

DIN	Abmessung dimension	C	D	D1	E (M)	1.4301/07 304			
DN006	8.0 x 1.0	14.0	SW19	8.5	16 x 1.5	705213			
DN008	10.0 x 1.0	14.0	SW22	10.5	18 x 1.5	705212			
DN010	12.0 x 1.0	15.0	SW27	12.5	22 x 1.5	700260			
DN010	13.0 x 1.5	15.0	SW27	13.5	22 x 1.5	709957			
DN015	19.0 x 1.5	15.5	42.0	19.5	30 x 1.5	700264			
DN020	23.0 x 1.5	17.0	48.0	23.5	36 x 2.0	700266			
DN025	29.0 x 1.5	18.0	55.0	29.5	42 x 2.0	700268			
DN032	35.0 x 1.5	19.0	65.0	35.5	52 x 2.0	700270			
DN040	41.0 x 1.5	21.0	70.0	41.5	56 x 2.0	700272			
DN050	53.0 x 1.5	21.0	82.0	53.5	68 x 2.0	700274			
DN065	70.0 x 2.0	27.0	105.0	70.5	90 x 3.0	700277			
DN080	85.0 x 2.0	27.0	115.0	85.5	100 x 3.0	700280			
DN100	104.0 x 2.0	29.0	145.0	104.5	130 x 4.0	700262			

ISO	Abmessung dimension	C	D	D1	E (M)	1.4301/07 304			
DN008	13.5 x 1.6	15.0	SW27	14.0	22 x 1.5	700279			
DN010	17.2 x 1.6	15.5	SW30	17.7	26 x 1.5	700261			
DN015	21.3 x 1.6	15.5	42.0	21.8	30 x 1.5	700265			
DN020	26.9 x 1.6	17.0	48.0	27.4	36 x 2.0	700267			
DN025	33.7 x 2.0	18.0	55.0	34.2	42 x 2.0	700269			
DN032	42.4 x 2.0	19.0	65.0	42.9	52 x 2.0	700271			
DN040	48.3 x 2.0	21.0	70.0	48.8	56 x 2.0	700273			
DN050	60.3 x 2.0	21.0	82.0	60.8	68 x 2.0	700275			
DN065	76.1 x 2.0	27.0	105.0	76.6	90 x 3.0	700278			
DN080	88.9 x 2.3	27.0	115.0	89.4	100 x 3.0	700281			
DN100	114.3 x 2.3	29.0	145.0	114.8	130 x 4.0	700263			