



2.10 STERI-Cap®

Rohrendkappe mit Orbitalschweißende

end cap for tubes with orbital welding end

Legende

- A Außendurchmesser
- B Innendurchmesser
- C Gesamtlänge

Abmessungen

- DIN 11866-A (DIN 11850)
- DIN 11866-B (EN ISO 1127)
- DIN 11866-C (ASME BPE)

Normative Verweisungen, Anforderungen / Abnahmen (Vormaterial)

- BN2
- EN 10088-1/-3
- EN 10204
- EN 10272
- ASTM A276
- ASTM A182/A182M / ASME SA182/SA182M
- ASTM A479/A479M / ASME SA479/SA479M
- AD 2000-W2

Kennzeichnung

Hersteller, Werkstoff, Abmessung, Schmelze

Toleranzen (Bezugsnorm)

ISO 2768-1

Verpackung

Schweißende mit Kunststoffkappe verschlossen, einzeln verpackt.

Werkstoffe

1.4435

weitere Werkstoffe auf Anfrage

Oberflächenbeschaffenheit ("MB")

innen: feinstgedreht, Ra < 0.8 µm
 außen: feingedreht, Ra < 1.6 µm

Key

- external diameter
- internal diameter
- total length

Dimensions

- DIN 11866-A (DIN 11850)
- DIN 11866-B (EN ISO 1127)
- DIN 11866-C (ASME BPE)

Normative References, Requirements / Approvals (raw material)

- BN2
- EN 10088-1/-3
- EN 10204
- EN 10272
- ASTM A276
- ASTM A182/A182M / ASME SA182/SA182M
- ASTM A479/A479M / ASME SA479/SA479M
- AD 2000-W2

Marking

manufacturer, material, dimension, heat

Tolerances (reference standard)

ISO 2768-1

Packaging

Welding end covered with plastic cap, wrapped separately.

Materials

316L

further materials on request

Surface condition ("MB")

inside: ultra-fine turned, Ra < 0.8 µm
 outside: refined turned, Ra < 1.6 µm

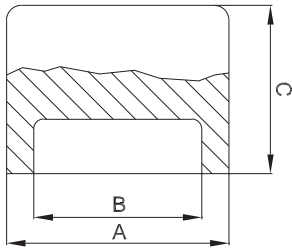


Oberflächenqualitäten | surface qualities

| Innenoberfläche internal surface finish | (Zusatz-) Artikel-Nr. (additional) order No |
|--|--|
| e-poliert e-polished | 999277 |
| Ra < 0.6 µm (STERI-line®) | 999279 |
| Ra < 0.5 µm (STERI-line®) | 999280 |
| Ra < 0.4 µm (HQ-line®) | 999281 |
| Ra < 0.25 µm (HQ-line®) | 999283 |

Bestellbeispiel | ordering example

| Artikelbezeichnung + Ausführungen article description + variants | Artikel-Nr. order No |
|---|-------------------------|
| STERI-Cap® DN025 ISO (1.4435) end cap for tubes | 704117 |
| e-poliert e-polished | + 999277 |
| Ra < 0.6 µm | + 999279 |



weitere Abmessungen auf Anfrage | further dimensions on request

| DIN | Abmessung dimension | A | B | C | | | MB 1.4435 | | | |
|-------|---------------------|-------|-------|------|--|--|-----------|--|--|--|
| DN006 | 8.0 x 1.0 | 8.0 | 6.0 | 25.0 | | | 704129 | | | |
| DN008 | 10.0 x 1.0 | 10.0 | 8.0 | 25.0 | | | 704130 | | | |
| DN010 | 12.0 x 1.0 | 12.0 | 10.0 | 25.0 | | | 704131 | | | |
| DN010 | 13.0 x 1.5 | 13.0 | 10.0 | 25.0 | | | 705398 | | | |
| DN015 | 19.0 x 1.5 | 19.0 | 16.0 | 25.0 | | | 704132 | | | |
| DN020 | 23.0 x 1.5 | 23.0 | 20.0 | 26.0 | | | 704021 | | | |
| DN025 | 29.0 x 1.5 | 29.0 | 26.0 | 30.0 | | | 704133 | | | |
| DN032 | 35.0 x 1.5 | 35.0 | 32.0 | 30.0 | | | 704022 | | | |
| DN040 | 41.0 x 1.5 | 41.0 | 38.0 | 31.0 | | | 704134 | | | |
| DN050 | 53.0 x 1.5 | 53.0 | 50.0 | 31.0 | | | 704135 | | | |
| DN065 | 70.0 x 2.0 | 70.0 | 66.0 | 41.0 | | | 704136 | | | |
| DN080 | 85.0 x 2.0 | 85.0 | 81.0 | 41.0 | | | 704137 | | | |
| DN100 | 104.0 x 2.0 | 104.0 | 100.0 | 41.0 | | | 703203 | | | |
| DN125 | 129.0 x 2.0 | 129.0 | 125.0 | 41.0 | | | 704138 | | | |
| DN150 | 154.0 x 2.0 | 154.0 | 150.0 | 41.0 | | | 704139 | | | |

| ISO | Abmessung dimension | A | B | C | | | MB 1.4435 | | | |
|-------|---------------------|-------|-------|------|--|--|-----------|--|--|--|
| DN008 | 13.5 x 1.6 | 13.5 | 10.3 | 25.0 | | | 704140 | | | |
| DN010 | 17.2 x 1.6 | 17.2 | 14.0 | 25.0 | | | 704141 | | | |
| DN015 | 21.3 x 1.6 | 21.3 | 18.1 | 25.0 | | | 704142 | | | |
| DN020 | 26.9 x 1.6 | 26.9 | 23.7 | 25.0 | | | 703995 | | | |
| DN025 | 33.7 x 2.0 | 33.7 | 29.7 | 30.0 | | | 704117 | | | |
| DN032 | 42.4 x 2.0 | 42.4 | 38.4 | 30.0 | | | 704143 | | | |
| DN040 | 48.3 x 2.0 | 48.3 | 44.3 | 25.0 | | | 704144 | | | |
| DN050 | 60.3 x 2.0 | 60.3 | 56.3 | 31.0 | | | 704118 | | | |
| DN065 | 76.1 x 2.0 | 76.1 | 72.1 | 41.0 | | | 704145 | | | |
| DN080 | 88.9 x 2.3 | 88.9 | 84.3 | 41.0 | | | 704146 | | | |
| DN100 | 114.3 x 2.3 | 114.3 | 109.7 | 41.0 | | | 703913 | | | |
| DN125 | 139.7 x 2.6 | 139.7 | 134.5 | 41.0 | | | 704114 | | | |
| DN150 | 168.3 x 2.6 | 168.3 | 163.1 | 41.0 | | | 703967 | | | |

| ASME BPE | Abmessung dimension | A | B | C | | | MB 1.4435 | | | |
|-----------|---------------------|-------|-------|------|--|--|-----------|--|--|--|
| DN 1/2" | 12.7 x 1.65 | 12.7 | 9.4 | 38.1 | | | 705328 | | | |
| DN 3/4" | 19.05 x 1.65 | 19.05 | 15.75 | 38.1 | | | 705329 | | | |
| DN 1" | 25.4 x 1.65 | 25.4 | 22.1 | 38.1 | | | 705330 | | | |
| DN 1 1/2" | 38.1 x 1.65 | 38.1 | 34.8 | 38.1 | | | 705331 | | | |
| DN 2" | 50.8 x 1.65 | 50.8 | 47.5 | 38.1 | | | 705332 | | | |
| DN 2 1/2" | 63.5 x 1.65 | 63.5 | 60.2 | 38.1 | | | 705333 | | | |
| DN 3" | 76.2 x 1.65 | 76.2 | 72.9 | 44.5 | | | 705334 | | | |
| DN 4" | 101.6 x 2.11 | 101.6 | 97.38 | 50.8 | | | 705335 | | | |

Klöpferböden nach DIN 28011 sind ebenfalls ab Lager lieferbar
Torispherical heads acc. to DIN 28011 are also available from stock