

**Legende**

- A Außendurchmesser
- B Innendurchmesser
- C Gesamtlänge
- D größter Außendurchmesser
- D1 Innendurchmesser (Nutmutter)
- E (Rund-) Gewinde (Rd)
- SW Schlüsselweite

Abmessungen

- DIN 11866-A (DIN 11850)
- DIN 11866-B (EN ISO 1127)
- DIN 11866-C (ASME BPE)

Normative Verweisungen,**Anforderungen / Abnahmen (Vormaterial)**

- DIN 11853
- EN 10088-1/-3
- EN 10204
- EN 10222-5 (Rohlinge)
- EN 10254 (Rohlinge)
- EN 10272
- ASTM A276
- ASTM A182/A182M / ASME SA182/SA182M
- ASTM A479/A479M / ASME SA479/SA479M
- ASME SA336 (Rohlinge)
- AD 2000-W2

Kennzeichnung

- Hersteller, Werkstoff, Abmessung, Schmelze,
- DIN 11853

Toleranzen (Bezugsnorm)

- DIN 11853 / ISO 2768-1 / DIN 405-2

Verpackung

- Schweißenden mit Kunststoffkappen verschlossen,
- einzelner verpackt.

Werkstoffe

- 1.4404 (mediumberührt)
- 1.4301/07 (nicht mediumberührt)
- EPDM (Standard)

weitere Werkstoffe auf Anfrage**Oberflächenbeschaffenheit ("MB")**

- innen: feinstgedreht, Ra < 0.8 µm
- außen: feingedreht, Ra < 1.6 µm

Key

- external diameter
- internal diameter
- total length
- biggest external diameter
- internal diameter (nut)
- (round) thread (Rd)
- width across flats (A/F)

Dimensions

- DIN 11866-A (DIN 11850)
- DIN 11866-B (EN ISO 1127)
- DIN 11866-C (ASME BPE)

Normative References,**Requirements / Approvals (raw material)**

- DIN 11853
- EN 10088-1/-3
- EN 10204
- EN 10222-5 (forgings)
- EN 10254 (forgings)
- EN 10272
- ASTM A276
- ASTM A182/A182M / ASME SA182/SA182M
- ASTM A479/A479M / ASME SA479/SA479M
- ASME SA336 (forgings)
- AD 2000-W2

Marking

- manufacturer, material, dimension, heat,
- DIN 11853

Tolerances (reference standard)

- DIN 11853 / ISO 2768-1 / DIN 405-2

Packaging

- Welding ends covered with plastic caps,
- wrapped separately.

Materials

- 316L (at medium contact surface)
- 304 (not at medium contact surface)
- EPDM (standard)

further materials on request**Surface condition ("MB")**

- inside: ultra-fine turned, Ra < 0.8 µm
- outside: refined turned, Ra < 1.6 µm

**Oberflächenqualitäten | surface qualities**

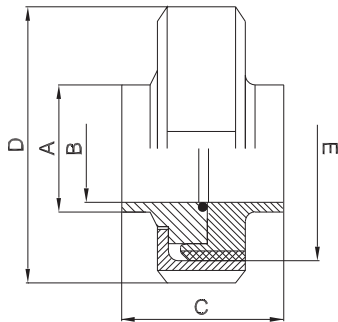
Innenoberfläche internal surface finish	(Zusatz-) Artikel-Nr. (additional) order No
e-poliert e-polished	999277
Ra < 0.6 µm (STERI-line®)	999279
Ra < 0.5 µm (STERI-line®)	999280
Ra < 0.4 µm (HQ-line®)	999281
Ra < 0.25 µm (HQ-line®)	999283

Bestellbeispiel | ordering example

Artikelbezeichnung + Ausführungen article description + variants	Artikel-Nr. order No
Hygiene-Verschraubung DN025 ISO (1.4404, EPDM) hygienic screwed pipe connection DIN 11853-1	706254
e-poliert e-polished	+ 999277
Ra < 0.25 µm	+ 999283



Zubehör ab Seite 75 | accessories from page 75 on



weitere Abmessungen auf Anfrage | further dimensions on request

DIN	Abmessung dimension	A	B	C	D	E (Rd)	MB 1.4404			
DN010	13.0 x 1.5	13.0	10.0	32.0	38.0	28 x 1/8"	705840			
DN015	19.0 x 1.5	19.0	16.0	32.0	44.0	34 x 1/8"	705841			
DN020	23.0 x 1.5	23.0	20.0	34.0	54.0	44 x 1/6"	705842			
DN025	29.0 x 1.5	29.0	26.0	42.0	63.0	52 x 1/6"	705843			
DN032	35.0 x 1.5	35.0	32.0	48.0	70.0	58 x 1/6"	705844			
DN040	41.0 x 1.5	41.0	38.0	50.0	78.0	65 x 1/6"	705845			
DN050	53.0 x 1.5	53.0	50.0	54.0	92.0	78 x 1/6"	705846			
DN065	70.0 x 2.0	70.0	66.0	62.0	112.0	95 x 1/6"	705847			
DN080	85.0 x 2.0	85.0	81.0	72.0	127.0	110 x 1/4"	705848			
DN100	104.0 x 2.0	104.0	100.0	86.0	148.0	130 x 1/4"	705849			

ISO	Abmessung dimension	A	B	C	D	E (Rd)	MB 1.4404			
DN008	13.5 x 1.6	13.5	10.3	32.0	38.0	28 x 1/8"	707343			
DN010	17.2 x 1.6	17.2	14.0	32.0	44.0	34 x 1/8"	707345			
DN015	21.3 x 1.6	21.3	18.1	34.0	54.0	44 x 1/6"	706252			
DN020	26.9 x 1.6	26.9	23.7	42.0	63.0	52 x 1/6"	706253			
DN025	33.7 x 2.0	33.7	29.7	48.0	70.0	58 x 1/6"	706254			
DN032	42.4 x 2.0	42.4	38.4	50.0	78.0	65 x 1/6"	706255			
DN040	48.3 x 2.0	48.3	44.3	54.0	92.0	78 x 1/6"	706256			
DN050	60.3 x 2.0	60.3	56.3	62.0	112.0	95 x 1/6"	706257			
DN065	76.1 x 2.0	76.1	72.1	72.0	127.0	110 x 1/4"	706258			
DN080	88.9 x 2.3	88.9	84.3	86.0	148.0	130 x 1/4"	706259			
DN100	114.3 x 2.3	114.3	109.7	86.0	178.0	160 x 1/4"	707448			

ASME BPE	Abmessung dimension	A	B	C	D	E (Rd)	MB 1.4404			
DN 1/2"	12.7 x 1.65	12.7	9.4	32.0	38.0	28 x 1/8"	709922			
DN 3/4"	19.05 x 1.65	19.05	15.75	32.0	44.0	34 x 1/8"	709923			
DN 1"	25.4 x 1.65	25.4	22.1	42.0	63.0	52 x 1/6"	706260			
DN 1 1/2"	38.1 x 1.65	38.1	34.8	50.0	78.0	65 x 1/6"	706261			
DN 2"	50.8 x 1.65	50.8	47.5	54.0	92.0	78 x 1/6"	706262			
DN 2 1/2"	63.5 x 1.65	63.5	60.2	62.0	112.0	95 x 1/6"	706263			
DN 3"	76.2 x 1.65	76.2	72.9	72.0	127.0	110 x 1/4"	706264			
DN 4"	101.6 x 2.11	101.6	97.38	86.0	148.0	130 x 1/4"	706265			

*) nicht in der DIN-Norm enthalten | non-standard