



Legende

- A Außendurchmesser
- B Innendurchmesser
- C Gesamtlänge
- D größter Außendurchmesser
- D1 Innendurchmesser (Nutmutter)
- E (Rund-) Gewinde (Rd)
- SW Schlüsselweite

Abmessungen

- DIN 11866-A (DIN 11850)
- DIN 11866-B (EN ISO 1127)
- DIN 11866-C (ASME BPE)

Normative Verweisungen, Anforderungen / Abnahmen (Vormaterial)

- DIN 11864
- DIN 405-1/-2
- BN2 (gültig für Bauteile in 1.4435)
- EN 10088-1/-3
- EN 10204
- EN 10222-5 (Rohlinge)
- EN 10254 (Rohlinge)
- EN 10272
- ASTM A276
- ASTM A182/A182M / ASME SA182/SA182M
- ASTM A479/A479M / ASME SA479/SA479M
- ASME SA336 (Rohlinge)
- AD 2000-W2

Kennzeichnung

Hersteller, Werkstoff, Abmessung, Schmelze, DIN 11864

Toleranzen (Bezugsnorm)

DIN 11864 / ISO 2768-1 / DIN 405-2

Verpackung

Schweißenden mit Kunststoffkappen verschlossen, einzeln verpackt.

Werkstoffe

- 1.4435 / 1.4404 (mediumberührt)
- 1.4301/07 (nicht mediumberührt)
- EPDM (Standard)

weitere Werkstoffe auf Anfrage

Oberflächenbeschaffenheit ("MB")

innen: feinstgedreht, Ra < 0.8 µm
 außen: feingedreht, Ra < 1.6 µm



Oberflächenqualitäten | surface qualities

Innenoberfläche internal surface finish	(Zusatz-) Artikel-Nr. (additional) order No
Ra < 0.6 µm (STERI-line®)	999279
Ra < 0.5 µm (STERI-line®)	999280
Ra < 0.4 µm (HQ-line®)	999281
Ra < 0.25 µm (HQ-line®)	999283



Zubehör ab Seite 75 | accessories from page 75 on

Key

- external diameter
- internal diameter
- total length
- biggest external diameter
- internal diameter (nut)
- (round) thread (Rd)
- width across flats (A/F)

Dimensions

- DIN 11866-A (DIN 11850)
- DIN 11866-B (EN ISO 1127)
- DIN 11866-C (ASME BPE)

Normative References, Requirements / Approvals (raw material)

- DIN 11864
- DIN 405-1/-2
- BN2 (valid for components in 1.4435)
- EN 10088-1/-3
- EN 10204
- EN 10222-5 (forgings)
- EN 10254 (forgings)
- EN 10272
- ASTM A276
- ASTM A182/A182M / ASME SA182/SA182M
- ASTM A479/A479M / ASME SA479/SA479M
- ASME SA336 (forgings)
- AD 2000-W2

Marking

manufacturer, material, dimension, heat, DIN 11864

Tolerances (reference standard)

DIN 11864 / ISO 2768-1 / DIN 405-2

Packaging

Welding ends covered with plastic caps, wrapped separately.

Materials

- 316L (at medium contact surface)
- 304 (not at medium contact surface)
- EPDM (standard)

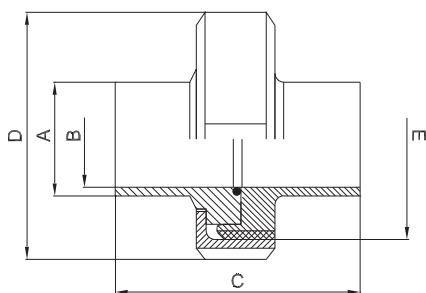
further materials on request

Surface condition ("MB")

inside: ultra-fine turned, Ra < 0.8 µm
 outside: refined turned, Ra < 1.6 µm

Bestellbeispiel | ordering example

Artikelbezeichnung + Ausführungen article description + variants	Artikel-Nr. order No
Steril-Verschraubung DN025 ISO (1.4435, EPDM) aseptic screwed pipe connection DIN 11864-1-A	707420
e-polier e-polished	
Ra < 0.25 µm	+ 999283



weitere Abmessungen auf Anfrage | further dimensions on request

DIN	Abmessung dimension	A	B	C	D	E (Rd)	MB 1.4435	e-pol. 1.4435	MB 1.4404	e-pol. 1.4404
DN010*	12.0 x 1.0	12.0	10.0	76.0	38.0	28 x 1/8"	708064	709977	XXX	XXX
DN010	13.0 x 1.5	13.0	10.0	76.0	38.0	28 x 1/8"	704277	709978	705156	709988
DN015	19.0 x 1.5	19.0	16.0	76.0	44.0	34 x 1/8"	704279	709979	705157	709989
DN020	23.0 x 1.5	23.0	20.0	76.0	54.0	44 x 1/8"	704281	709980	705158	709990
DN025	29.0 x 1.5	29.0	26.0	77.0	63.0	52 x 1/8"	704283	709981	705159	709991
DN032	35.0 x 1.5	35.0	32.0	88.0	70.0	58 x 1/8"	704285	709982	705160	709992
DN040	41.0 x 1.5	41.0	38.0	88.0	78.0	65 x 1/8"	704287	709983	705161	709993
DN050	53.0 x 1.5	53.0	50.0	89.0	92.0	78 x 1/8"	704289	709984	705162	709994
DN065	70.0 x 2.0	70.0	66.0	113.0	112.0	95 x 1/8"	704292	709985	705163	709995
DN080	85.0 x 2.0	85.0	81.0	117.0	127.0	110 x 1/4"	704293	709986	705164	709996
DN100	104.0 x 2.0	104.0	100.0	120.0	148.0	130 x 1/4"	704295	709987	705165	709997

ISO	Abmessung dimension	A	B	C	D	E (Rd)	MB 1.4435	e-pol. 1.4435	MB 1.4404	e-pol. 1.4404
DN008	13.5 x 1.6	13.5	10.3	76.0	38.0	28 x 1/8"	704635	707416	707342	707427
DN010	17.2 x 1.6	17.2	14.0	76.0	44.0	34 x 1/8"	704278	707417	707344	707428
DN015	21.3 x 1.6	21.3	18.1	78.0	54.0	44 x 1/8"	704280	707418	705166	707429
DN020	26.9 x 1.6	26.9	23.7	78.0	63.0	52 x 1/8"	704282	707419	705167	707430
DN025	33.7 x 2.0	33.7	29.7	88.0	70.0	58 x 1/8"	704284	707420	705168	707431
DN032	42.4 x 2.0	42.4	38.4	88.0	78.0	65 x 1/8"	704286	707421	705169	707432
DN040	48.3 x 2.0	48.3	44.3	90.0	92.0	78 x 1/8"	704288	707422	704920	707433
DN050	60.3 x 2.0	60.3	56.3	114.0	112.0	95 x 1/8"	704290	707423	705170	707434
DN065	76.1 x 2.0	76.1	72.1	117.0	127.0	110 x 1/4"	704276	707424	705171	707435
DN080	88.9 x 2.3	88.9	84.3	122.0	148.0	130 x 1/4"	704294	707425	705172	707436
DN100*	114.3 x 2.3	114.3	109.7	130.0	178.0	160 x 1/4"	704296	707426	705173	707437

ASME BPE	Abmessung dimension	A	B	C	D	E (Rd)	MB 1.4435	e-pol. 1.4435	MB 1.4404	e-pol. 1.4404
DN 1/2"	12.7 x 1.65	12.7	9.4	76.0	38.0	28 x 1/8"	704648	710002	709920	710010
DN 3/4"	19.05 x 1.65	19.05	15.75	76.0	44.0	34 x 1/8"	704649	710003	709921	710011
DN 1"	25.4 x 1.65	25.4	22.1	77.0	63.0	52 x 1/8"	704650	710004	705174	710012
DN 1 1/2"	38.1 x 1.65	38.1	34.8	88.0	78.0	65 x 1/8"	704651	710005	705175	710013
DN 2"	50.8 x 1.65	50.8	47.5	89.0	92.0	78 x 1/8"	704652	710006	705176	710014
DN 2 1/2"	63.5 x 1.65	63.5	60.2	115.0	112.0	95 x 1/8"	704653	710007	705177	710015
DN 3"	76.2 x 1.65	76.2	72.9	117.0	127.0	110 x 1/4"	704654	710008	705178	710016
DN 4"	101.6 x 2.11	101.6	97.38	119.0	148.0	130 x 1/4"	704655	710009	705179	710017

*) nicht in der DIN-Norm enthalten | non-standard