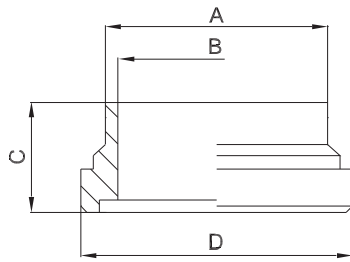




hygienic liner



zusätzliche Oberflächenqualitäten analog Seite | additional surface qualities analog page 16

weitere Abmessungen auf Anfrage | further dimensions on request

DIN	Abmessung dimension	A	B	C	D	MB 1.4404			
DN010	13.0 x 1.5	13.0	10.0	17.0	21.9	704234			
DN015	19.0 x 1.5	19.0	16.0	17.0	27.9	704037			
DN020	23.0 x 1.5	23.0	20.0	18.0	35.9	704089			
DN025	29.0 x 1.5	29.0	26.0	22.0	42.9	704233			
DN032	35.0 x 1.5	35.0	32.0	25.0	48.9	704047			
DN040	41.0 x 1.5	41.0	38.0	26.0	54.9	704793			
DN050	53.0 x 1.5	53.0	50.0	30.0	66.9	705633			
DN065	70.0 x 2.0	70.0	66.0	34.0	84.9	705634			
DN080	85.0 x 2.0	85.0	81.0	38.0	98.9	706287			
DN100	104.0 x 2.0	104.0	100.0	46.0	118.9	706288			

ISO	Abmessung dimension	A	B	C	D	MB 1.4404			
DN008	13.5 x 1.6	13.5	10.3	17.0	21.9	707331			
DN010	17.2 x 1.6	17.2	14.0	17.0	27.9	707332			
DN015	21.3 x 1.6	21.3	18.1	18.0	35.9	705608			
DN020	26.9 x 1.6	26.9	23.7	22.0	42.9	706036			
DN025	33.7 x 2.0	33.7	29.7	25.0	48.9	705609			
DN032	42.4 x 2.0	42.4	38.4	26.0	54.9	705610			
DN040	48.3 x 2.0	48.3	44.3	30.0	66.9	705611			
DN050	60.3 x 2.0	60.3	56.3	34.0	84.9	705027			
DN065	76.1 x 2.0	76.1	72.1	38.0	98.9	706289			
DN080	88.9 x 2.3	88.9	84.3	46.0	118.9	706290			
DN100*	114.3 x 2.3	114.3	109.7	46.0	147.9	707333			

ASME BPE	Abmessung dimension	A	B	C	D	MB 1.4404			
DN 1/2"	12.7 x 1.65	12.7	9.4	17.0	21.9	709913			
DN 3/4"	19.05 x 1.65	19.05	15.75	17.0	27.9	709914			
DN 1"	25.4 x 1.65	25.4	22.1	22.0	42.9	706291			
DN 1 1/2"	38.1 x 1.65	38.1	34.8	26.0	54.9	706292			
DN 2"	50.8 x 1.65	50.8	47.5	30.0	66.9	706293			
DN 2 1/2"	63.5 x 1.65	63.5	60.2	34.0	84.9	706294			
DN 3"	76.2 x 1.65	76.2	72.9	38.0	98.9	706295			
DN 4"	101.6 x 2.11	101.6	97.38	46.0	118.9	706296			

*) nicht in der DIN-Norm enthalten | non-standard