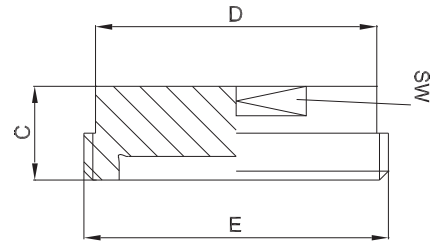




## 2.2.4 Blindgewindestutzen DIN 11864-1-A/DIN 11853-1

blind threaded connecting piece (male part)



zusätzliche Oberflächenqualitäten analog Seite | additional surface qualities analog page 16

weitere Abmessungen auf Anfrage | further dimensions on request

DIN	Abmessung dimension	C	D	E (Rd)	SW	MB 1.4435	MB 1.4404		
DN010	13.0 x 1.5	24.0	23.0	28 x 1/8"	19.0	703403	705122		
DN015	19.0 x 1.5	24.0	28.0	34 x 1/8"	24.0	703404	705186		
DN020	23.0 x 1.5	24.0	34.0	44 x 1/6"	30.0	703405	705187		
DN025	29.0 x 1.5	24.0	44.0	52 x 1/6"	41.0	703406	705188		
DN032	35.0 x 1.5	24.0	53.0	58 x 1/6"	46.0	703407	705189		
DN040	41.0 x 1.5	24.0	60.0	65 x 1/6"	50.0	703408	705190		
DN050	53.0 x 1.5	24.0	72.0	78 x 1/6"	65.0	703409	705191		
DN065	70.0 x 2.0	28.0	87.0	95 x 1/6"	80.0	703410	705192		
DN080	85.0 x 2.0	28.0	100.0	110 x 1/4"	95.0	703411	705193		
DN100	104.0 x 2.0	30.0	120.0	130 x 1/4"	115.0	703412	705194		

ISO	Abmessung dimension	C	D	E (Rd)	SW	MB 1.4435	MB 1.4404		
DN008	13.5 x 1.6	24.0	23.0	28 x 1/8"	19.0	704717	709915		
DN010	17.2 x 1.6	24.0	28.0	34 x 1/8"	24.0	704716	709916		
DN015	21.3 x 1.6	24.0	34.0	44 x 1/6"	30.0	704718	705195		
DN020	26.9 x 1.6	24.0	44.0	52 x 1/6"	41.0	704719	705196		
DN025	33.7 x 2.0	24.0	53.0	58 x 1/6"	46.0	704720	705197		
DN032	42.4 x 2.0	24.0	60.0	65 x 1/6"	50.0	704721	705198		
DN040	48.3 x 2.0	24.0	72.0	78 x 1/6"	65.0	704722	705199		
DN050	60.3 x 2.0	28.0	87.0	95 x 1/6"	80.0	704723	705200		
DN065	76.1 x 2.0	28.0	100.0	110 x 1/4"	95.0	704724	705201		
DN080	88.9 x 2.3	30.0	120.0	130 x 1/4"	115.0	704725	705202		
DN100	114.3 x 2.3	38.0	150.0	160 x 1/4"	145.0	704726	705203		

ASME BPE	Abmessung dimension	C	D	E (Rd)	SW	MB 1.4435	MB 1.4404		
DN 1/2"	12.7 x 1.65	24.0	23.0	28 x 1/8"	19.0	704727	709917		
DN 3/4"	19.05 x 1.65	24.0	28.0	34 x 1/8"	24.0	704728	709918		
DN 1"	25.4 x 1.65	24.0	44.0	52 x 1/6"	41.0	704729	705180		
DN 1 1/2"	38.1 x 1.65	24.0	60.0	65 x 1/6"	50.0	704730	705181		
DN 2"	50.8 x 1.65	24.0	72.0	78 x 1/6"	65.0	704731	705182		
DN 2 1/2"	63.5 x 1.65	28.0	87.0	95 x 1/6"	80.0	704732	705183		
DN 3"	76.2 x 1.65	28.0	100.0	110 x 1/4"	95.0	704733	705184		
DN 4"	101.6 x 2.11	30.0	120.0	130 x 1/4"	115.0	704734	705185		