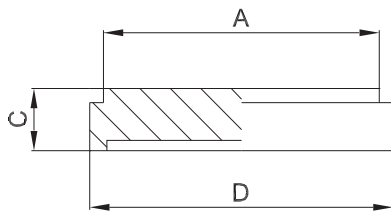




2.2.5 Blindbundstutzen DIN 11864-1-A/DIN 11853-1

blind liner



weitere Abmessungen auf Anfrage | further dimensions on request

zusätzliche Oberflächenqualitäten analog Seite | additional surface qualities analog page 16

DIN	Abmessung dimension	A	C	D			MB 1.4435	MB 1.4404		
DN010	13.0 x 1.5	18.0	9.0	21.9			703413	705110		
DN015	19.0 x 1.5	24.0	9.0	27.9			703414	705109		
DN020	23.0 x 1.5	30.0	10.0	35.9			703415	705108		
DN025	29.0 x 1.5	35.0	12.0	42.9			703416	705021		
DN032	35.0 x 1.5	41.0	13.0	48.9			703417	705107		
DN040	41.0 x 1.5	48.0	13.0	54.9			703418	705023		
DN050	53.0 x 1.5	61.0	14.0	66.9			703419	705059		
DN065	70.0 x 2.0	79.0	16.0	84.9			703420	704965		
DN080	85.0 x 2.0	93.0	16.0	98.9			703421	704964		
DN100	104.0 x 2.0	114.0	20.0	118.9			703422	705024		

ISO	Abmessung dimension	A	C	D			MB 1.4435	MB 1.4404		
DN008	13.5 x 1.6	18.0	9.0	21.9			704700	709842		
DN010	17.2 x 1.6	24.0	9.0	27.9			704701	709843		
DN015	21.3 x 1.6	30.0	10.0	35.9			704594	705029		
DN020	26.9 x 1.6	35.0	12.0	42.9			704702	705111		
DN025	33.7 x 2.0	41.0	13.0	48.9			704534	704967		
DN032	42.4 x 2.0	48.0	13.0	54.9			704703	705112		
DN040	48.3 x 2.0	61.0	14.0	66.9			704704	705022		
DN050	60.3 x 2.0	79.0	16.0	84.9			704548	704992		
DN065	76.1 x 2.0	93.0	16.0	98.9			704705	705113		
DN080	88.9 x 2.3	114.0	20.0	118.9			704706	705114		
DN100	114.3 x 2.3	137.0	22.0	147.9			704707	709919		

ASME BPE	Abmessung dimension	A	C	D			MB 1.4435	MB 1.4404		
DN 1/2"	12.7 x 1.65	18.0	9.0	21.9			704708	709844		
DN 3/4"	19.05 x 1.65	24.0	9.0	27.9			704709	709845		
DN 1"	25.4 x 1.65	35.0	12.0	42.9			704710	705116		
DN 1 1/2"	38.1 x 1.65	48.0	13.0	54.9			704711	705117		
DN 2"	50.8 x 1.65	61.0	14.0	66.9			704712	705118		
DN 2 1/2"	63.5 x 1.65	79.0	16.0	84.9			704713	705119		
DN 3"	76.2 x 1.65	93.0	16.0	98.9			704714	705120		
DN 4"	101.6 x 2.11	114.0	20.0	118.9			704715	705121		