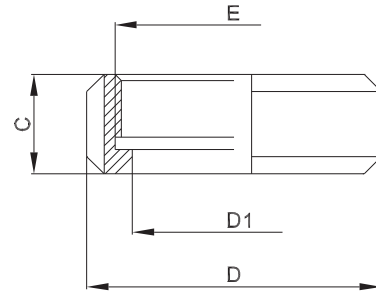




## 2.2.6 Nutmutter mit Freistich (DIN 11851-F)

nut with thread undercut



DIN	Abmessung dimension	C	D	D1	E (Rd)	1.4301/07 304	1.4404 316L		
DN010	13.0 x 1.5	18.0	38.0	19.0	28 x 1/8"	708892	701474		
DN015	19.0 x 1.5	18.0	44.0	25.0	34 x 1/8"	708667	701475		
DN020	23.0 x 1.5	20.0	54.0	31.0	44 x 1/6"	708881	701476		
DN025	29.0 x 1.5	21.0	63.0	36.0	52 x 1/6"	708300	701477		
DN032	35.0 x 1.5	21.0	70.0	42.0	58 x 1/6"	708668	701478		
DN040	41.0 x 1.5	21.0	78.0	49.0	65 x 1/6"	708787	701479		
DN050	53.0 x 1.5	22.0	92.0	62.0	78 x 1/6"	708656	701480		
DN065	70.0 x 2.0	25.0	112.0	80.0	95 x 1/6"	708882	701481		
DN080	85.0 x 2.0	29.0	127.0	94.0	110 x 1/4"	708883	701482		
DN100	104.0 x 2.0	31.0	148.0	115.0	130 x 1/4"	703495	701483		

ISO	Abmessung dimension	C	D	D1	E (Rd)	1.4301/07 304	1.4404 316L		
DN008	13.5 x 1.6	18.0	38.0	19.0	28 x 1/8"	708892	701474		
DN010	17.2 x 1.6	18.0	44.0	25.0	34 x 1/8"	708667	701475		
DN015	21.3 x 1.6	20.0	54.0	31.0	44 x 1/6"	708881	701476		
DN020	26.9 x 1.6	21.0	63.0	36.0	52 x 1/6"	708300	701477		
DN025	33.7 x 2.0	21.0	70.0	42.0	58 x 1/6"	708668	701478		
DN032	42.4 x 2.0	21.0	78.0	49.0	65 x 1/6"	708787	701479		
DN040	48.3 x 2.0	22.0	92.0	62.0	78 x 1/6"	708656	701480		
DN050	60.3 x 2.0	25.0	112.0	80.0	95 x 1/6"	708882	701481		
DN065	76.1 x 2.0	29.0	127.0	94.0	110 x 1/4"	708883	701482		
DN080	88.9 x 2.3	31.0	148.0	115.0	130 x 1/4"	703495	701483		
DN100	114.3 x 2.3	35.0	178.0	138.0	160 x 1/4"	702977	701484		

ASME BPE	Abmessung dimension	C	D	D1	E (Rd)	1.4301/07 304	1.4404 316L		
DN 1/2"	12.7 x 1.65	18.0	38.0	19.0	28 x 1/8"	708892	701474		
DN 3/4"	19.05 x 1.65	18.0	44.0	25.0	34 x 1/8"	708667	701475		
DN 1"	25.4 x 1.65	21.0	63.0	36.0	52 x 1/6"	708300	701477		
DN 1 1/2"	38.1 x 1.65	21.0	78.0	49.0	65 x 1/6"	708787	701479		
DN 2"	50.8 x 1.65	22.0	92.0	62.0	78 x 1/6"	708656	701480		
DN 2 1/2"	63.5 x 1.65	25.0	112.0	80.0	95 x 1/6"	708882	701481		
DN 3"	76.2 x 1.65	29.0	127.0	94.0	110 x 1/4"	708883	701482		
DN 4"	101.6 x 2.11	31.0	148.0	115.0	130 x 1/4"	703495	701483		