

Legende

- A Außendurchmesser
- B Innendurchmesser
- C Gesamtlänge
- D Flansch-Außendurchmesser
- LK Lochkreis

Abmessungen

DIN 11866-A (DIN 11850)
 DIN 11866-B (EN ISO 1127)
 auf Anfrage: DIN 11866-C (ASME BPE)

Normative Verweisungen,

Anforderungen / Abnahmen (Vormaterial)

BN2
 EN 10088-1/-3
 EN 10204
 EN 10222-5 (Rohlinge)
 EN 10254 (Rohlinge)
 EN 10272
 ASTM A276
 ASTM A182/A182M / ASME SA182/SA182M
 ASTM A479/A479M / ASME SA479/SA479M
 ASME SA336 (Rohlinge)
 AD 2000-W2

Kennzeichnung

Hersteller, Werkstoff, Abmessung, Schmelze,
 STERI-Connect®

Toleranzen (Bezugsnorm)

ISO 2768-1

Verpackung

Schweißenden mit Kunststoffkappen verschlossen,
 einzeln verpackt.

Werkstoffe

1.4435 (mediumberührt)
 1.4301/07 (nicht mediumberührt)
 EPDM (Standard)

weitere Werkstoffe auf Anfrage

Oberflächenbeschaffenheit ("MB")

innen: feinstgedreht, Ra < 0.8 µm
 außen: feingedreht, Ra < 1.6 µm

Key

- external diameter
- internal diameter
- total length
- outer flange diameter
- bolt circle

Dimensions

DIN 11866-A (DIN 11850)
 DIN 11866-B (EN ISO 1127)
 on request: DIN 11866-C (ASME BPE)

Normative References,

Requirements / Approvals (raw material)

BN2
 EN 10088-1/-3
 EN 10204
 EN 10222-5 (forgings)
 EN 10254 (forgings)
 EN 10272
 ASTM A276
 ASTM A182/A182M / ASME SA182/SA182M
 ASTM A479/A479M / ASME SA479/SA479M
 ASME SA336 (forgings)
 AD 2000-W2

Marking

manufacturer, material, dimension, heat,
 STERI-Connect®

Tolerances (reference standard)

ISO 2768-1

Packaging

Welding ends covered with plastic caps,
 wrapped separately.

Materials

316L (at medium contact surface)
 304 (not at medium contact surface)
 EPDM (standard)

further materials on request

Surface condition ("MB")

inside: ultra-fine turned, Ra < 0.8 µm
 outside: refined turned, Ra < 1.6 µm



Oberflächenqualitäten | surface qualities

Innenoberfläche internal surface finish	(Zusatz-) Artikel-Nr. (additional) order No
e-polier e-polished	999277
Ra < 0.6 µm (STERI-line®)	999279
Ra < 0.5 µm (STERI-line®)	999280
Ra < 0.4 µm (HQ-line®)	999281
Ra < 0.25 µm (HQ-line®)	999283

Bestellbeispiel | ordering example

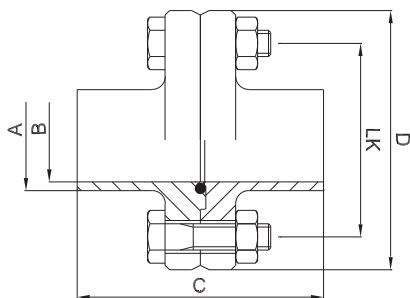
Artikelbezeichnung + Ausführungen article description + variants	Artikel-Nr. order No
Steril-Flanschverbindung DN025 ISO (1.4435, EPDM) aseptic flange connection STERI-Connect®	700448
e-polier e-polished	+ 999277
Ra < 0.25 µm	+ 999283



Zubehör ab Seite 73 | accessories from page 73 on



2.3.1 Steril-Flanschverbindung STERI-Connect®



weitere Abmessungen auf Anfrage | further dimensions on request

DIN	Abmessung dimension	A	B	C	D	LK	MB 1.4435			
DN008	10.0 x 1.0	10.0	8.0	88.0	60.0	40.0	705214			
DN010	12.0 x 1.0	12.0	10.0	88.0	65.0	45.0	700439			
DN010	13.0 x 1.5	13.0	10.0	88.0	65.0	45.0	709784			
DN015	19.0 x 1.5	19.0	16.0	88.0	75.0	55.0	700443			
DN020	23.0 x 1.5	23.0	20.0	92.0	80.0	60.0	700445			
DN025	29.0 x 1.5	29.0	26.0	102.0	85.0	65.0	700447			
DN032	35.0 x 1.5	35.0	32.0	102.0	95.0	75.0	700449			
DN040	41.0 x 1.5	41.0	38.0	102.0	100.0	80.0	700451			
DN050	53.0 x 1.5	53.0	50.0	106.0	110.0	90.0	700453			
DN065	70.0 x 2.0	70.0	66.0	130.0	140.0	115.0	700456			
DN080	85.0 x 2.0	85.0	81.0	130.0	150.0	125.0	700459			
DN100	104.0 x 2.0	104.0	100.0	134.0	175.0	150.0	700441			

ISO	Abmessung dimension	A	B	C	D	LK	MB 1.4435			
DN008	13.5 x 1.6	13.5	10.3	88.0	60.0	40.0	700458			
DN010	17.2 x 1.6	17.2	14.0	88.0	65.0	45.0	700440			
DN015	21.3 x 1.6	21.3	18.1	88.0	75.0	55.0	700444			
DN020	26.9 x 1.6	26.9	23.7	92.0	80.0	60.0	700446			
DN025	33.7 x 2.0	33.7	29.7	102.0	85.0	65.0	700448			
DN032	42.4 x 2.0	42.4	38.4	102.0	95.0	75.0	700450			
DN040	48.3 x 2.0	48.3	44.3	102.0	100.0	80.0	700452			
DN050	60.3 x 2.0	60.3	56.3	106.0	110.0	90.0	700454			
DN065	76.1 x 2.0	76.1	72.1	130.0	140.0	115.0	700457			
DN080	88.9 x 2.3	88.9	84.3	130.0	150.0	125.0	700460			
DN100	114.3 x 2.3	114.3	109.7	134.0	175.0	150.0	700442			