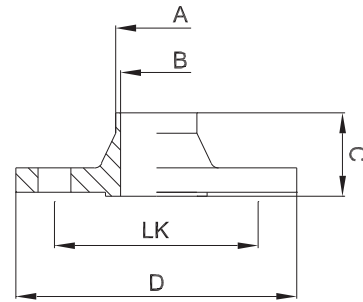




2.3.2 Steril-Flansch -VS- STERI-Connect®

aseptic flange -VS-



zusätzliche Oberflächenqualitäten analog Seite | additional surface qualities analog page 25

weitere Abmessungen auf Anfrage | further dimensions on request

DIN	Abmessung dimension	A	B	C	D	LK	MB 1.4435			
DN008	10.0 x 1.0	10.0	8.0	45.0	60.0	40.0	704205			
DN010	12.0 x 1.0	12.0	10.0	45.0	65.0	45.0	700417			
DN010	13.0 x 1.5	13.0	10.0	45.0	65.0	45.0	709175			
DN015	19.0 x 1.5	19.0	16.0	45.0	75.0	55.0	700421			
DN020	23.0 x 1.5	23.0	20.0	47.0	80.0	60.0	700423			
DN025	29.0 x 1.5	29.0	26.0	52.0	85.0	65.0	700425			
DN032	35.0 x 1.5	35.0	32.0	52.0	95.0	75.0	700427			
DN040	41.0 x 1.5	41.0	38.0	52.0	100.0	80.0	700429			
DN050	53.0 x 1.5	53.0	50.0	54.0	110.0	90.0	703007			
DN065	70.0 x 2.0	70.0	66.0	66.0	140.0	115.0	700434			
DN080	85.0 x 2.0	85.0	81.0	66.0	150.0	125.0	700437			
DN100	104.0 x 2.0	104.0	100.0	68.0	175.0	150.0	700419			

ISO	Abmessung dimension	A	B	C	D	LK	MB 1.4435			
DN008	13.5 x 1.6	13.5	10.3	45.0	60.0	40.0	700436			
DN010	17.2 x 1.6	17.2	14.0	45.0	65.0	45.0	700418			
DN015	21.3 x 1.6	21.3	18.1	45.0	75.0	55.0	700422			
DN020	26.9 x 1.6	26.9	23.7	47.0	80.0	60.0	700424			
DN025	33.7 x 2.0	33.7	29.7	52.0	85.0	65.0	700426			
DN032	42.4 x 2.0	42.4	38.4	52.0	95.0	75.0	700428			
DN040	48.3 x 2.0	48.3	44.3	52.0	100.0	80.0	700430			
DN050	60.3 x 2.0	60.3	56.3	54.0	110.0	90.0	700432			
DN065	76.1 x 2.0	76.1	72.1	66.0	140.0	115.0	700435			
DN080	88.9 x 2.3	88.9	84.3	66.0	150.0	125.0	700438			
DN100	114.3 x 2.3	114.3	109.7	68.0	175.0	150.0	700420			