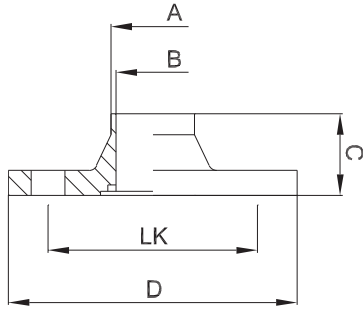




aseptic flange -RS-



weitere Abmessungen auf Anfrage | further dimensions on request

zusätzliche Oberflächenqualitäten analog Seite | additional surface qualities analog page 25

DIN	Abmessung dimension	A	B	C	D	LK	MB 1.4435			
DN008	10.0 x 1.0	10.0	8.0	45.0	60.0	40.0	704054			
DN010	12.0 x 1.0	12.0	10.0	45.0	65.0	45.0	700395			
DN010	13.0 x 1.5	13.0	10.0	45.0	65.0	45.0	708615			
DN015	19.0 x 1.5	19.0	16.0	45.0	75.0	55.0	700399			
DN020	23.0 x 1.5	23.0	20.0	47.0	80.0	60.0	700401			
DN025	29.0 x 1.5	29.0	26.0	52.0	85.0	65.0	700403			
DN032	35.0 x 1.5	35.0	32.0	52.0	95.0	75.0	700405			
DN040	41.0 x 1.5	41.0	38.0	52.0	100.0	80.0	700407			
DN050	53.0 x 1.5	53.0	50.0	54.0	110.0	90.0	700409			
DN065	70.0 x 2.0	70.0	66.0	66.0	140.0	115.0	700412			
DN080	85.0 x 2.0	85.0	81.0	66.0	150.0	125.0	700415			
DN100	104.0 x 2.0	104.0	100.0	68.0	175.0	150.0	700397			

ISO	Abmessung dimension	A	B	C	D	LK	MB 1.4435			
DN008	13.5 x 1.6	13.5	10.3	45.0	60.0	40.0	700414			
DN010	17.2 x 1.6	17.2	14.0	45.0	65.0	45.0	700396			
DN015	21.3 x 1.6	21.3	18.1	45.0	75.0	55.0	700400			
DN020	26.9 x 1.6	26.9	23.7	47.0	80.0	60.0	700402			
DN025	33.7 x 2.0	33.7	29.7	52.0	85.0	65.0	700404			
DN032	42.4 x 2.0	42.4	38.4	52.0	95.0	75.0	700406			
DN040	48.3 x 2.0	48.3	44.3	52.0	100.0	80.0	700408			
DN050	60.3 x 2.0	60.3	56.3	54.0	110.0	90.0	700410			
DN065	76.1 x 2.0	76.1	72.1	66.0	140.0	115.0	700413			
DN080	88.9 x 2.3	88.9	84.3	66.0	150.0	125.0	700416			
DN100	114.3 x 2.3	114.3	109.7	68.0	175.0	150.0	700398			