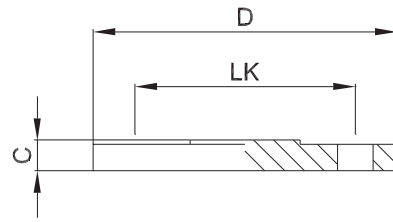




### 2.3.4 Steril-Blindflansch -VS- STERI-Connect®

aseptic blind flange -VS-



zusätzliche Oberflächenqualitäten analog Seite | additional surface qualities analog page 25

weitere Abmessungen auf Anfrage | further dimensions on request

DIN	Abmessung dimension	C	D	LK			MB 1.4435			
DN008	10.0 x 1.0	10.0	60.0	40.0			700393			
DN010	12.0 x 1.0	10.0	65.0	45.0			700383			
DN010	13.0 x 1.5	10.0	65.0	45.0			709838			
DN015	19.0 x 1.5	10.0	75.0	55.0			700385			
DN020	23.0 x 1.5	12.0	80.0	60.0			700386			
DN025	29.0 x 1.5	12.0	85.0	65.0			700387			
DN032	35.0 x 1.5	12.0	95.0	75.0			700388			
DN040	41.0 x 1.5	12.0	100.0	80.0			700389			
DN050	53.0 x 1.5	14.0	110.0	90.0			700390			
DN065	70.0 x 2.0	16.0	140.0	115.0			700392			
DN080	85.0 x 2.0	16.0	150.0	125.0			700394			
DN100	104.0 x 2.0	18.0	175.0	150.0			700384			

ISO	Abmessung dimension	C	D	LK			MB 1.4435			
DN008	13.5 x 1.6	10.0	60.0	40.0			705244			
DN010	17.2 x 1.6	10.0	65.0	45.0			705245			
DN015	21.3 x 1.6	10.0	75.0	55.0			705246			
DN020	26.9 x 1.6	12.0	80.0	60.0			705247			
DN025	33.7 x 2.0	12.0	85.0	65.0			704204			
DN032	42.4 x 2.0	12.0	95.0	75.0			704609			
DN040	48.3 x 2.0	12.0	100.0	80.0			705248			
DN050	60.3 x 2.0	14.0	110.0	90.0			705249			
DN065	76.1 x 2.0	16.0	140.0	115.0			705250			
DN080	88.9 x 2.3	16.0	150.0	125.0			705251			
DN100	114.3 x 2.3	18.0	175.0	150.0			705252			