

Legende

- A Außendurchmesser
- B Innendurchmesser
- C Gesamtlänge
- D Flansch-Außendurchmesser
- LK Lochkreis

Abmessungen

- DIN 11866-A (DIN 11850)
- DIN 11866-B (EN ISO 1127)
- DIN 11866-C (ASME BPE)

Normative Verweisungen, Anforderungen / Abnahmen (Vormaterial)

- DIN 11853
- EN 10088-1/-3
- EN 10204
- EN 10222-5 (Rohlinge)
- EN 10254 (Rohlinge)
- EN 10272
- ASTM A276
- ASTM A182/A182M / ASME SA182/SA182M
- ASTM A479/A479M / ASME SA479/SA479M
- ASME SA336 (Rohlinge)
- AD 2000-W2

Kennzeichnung

Hersteller, Werkstoff, Abmessung, Schmelze, DIN 11853

Toleranzen (Bezugsnorm)

DIN 11853 / ISO 2768-1

Verpackung

Schweißenden mit Kunststoffkappen verschlossen, einzeln verpackt.

Werkstoffe

- 1.4404 (mediumberührt)
- 1.4301/07 (nicht mediumberührt)
- EPDM (Standard)

weitere Werkstoffe auf Anfrage

Oberflächenbeschaffenheit ("MB")

innen: feinstgedreht, Ra < 0.8 µm
 außen: feingedreht, Ra < 1.6 µm

Key

- external diameter
- internal diameter
- total length
- outer flange diameter
- bolt circle

Dimensions

- DIN 11866-A (DIN 11850)
- DIN 11866-B (EN ISO 1127)
- DIN 11866-C (ASME BPE)

Normative References, Requirements / Approvals (raw material)

- DIN 11853
- EN 10088-1/-3
- EN 10204
- EN 10222-5 (forgings)
- EN 10254 (forgings)
- EN 10272
- ASTM A276
- ASTM A182/A182M / ASME SA182/SA182M
- ASTM A479/A479M / ASME SA479/SA479M
- ASME SA336 (forgings)
- AD 2000-W2

Marking

manufacturer, material, dimension, heat, DIN 11853

Tolerances (reference standard)

DIN 11853 / ISO 2768-1

Packaging

Welding ends covered with plastic caps, wrapped separately.

Materials

- 316L (at medium contact surface)
- 304 (not at medium contact surface)
- EPDM (standard)

further materials on request

Surface condition ("MB")

inside: ultra-fine turned, Ra < 0.8 µm
 outside: refined turned, Ra < 1.6 µm



Oberflächenqualitäten | surface qualities

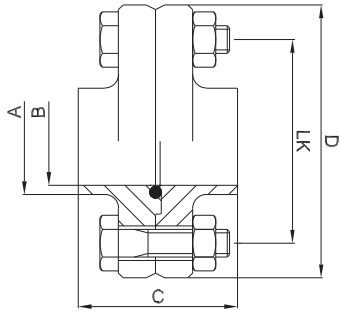
Innenoberfläche internal surface finish	(Zusatz-) Artikel-Nr. (additional) order No
e-poliert e-polished	999277
Ra < 0.6 µm (STERI-line®)	999279
Ra < 0.5 µm (STERI-line®)	999280
Ra < 0.4 µm (HQ-line®)	999281
Ra < 0.25 µm (HQ-line®)	999283

Bestellbeispiel | ordering example

Artikelbezeichnung + Ausführungen article description + variants	Artikel-Nr. order No
Hygiene-Flanschverbindung DN025 ISO DIN 11853-2 hygienic flange connection (1.4404, EPDM)	706190
e-poliert e-polished	+ 999277
Ra < 0.25 µm	+ 999283



Zubehör ab Seite 75 | accessories from page 75 on



weitere Abmessungen auf Anfrage | further dimensions on request

DIN	Abmessung dimension	A	B	C	D	LK	MB 1.4404			
DN010	13.0 x 1.5	13.0	10.0	48.0	54.0	37.0	706177			
DN015	19.0 x 1.5	19.0	16.0	48.0	59.0	42.0	705254			
DN020	23.0 x 1.5	23.0	20.0	48.0	64.0	47.0	706178			
DN025	29.0 x 1.5	29.0	26.0	48.0	70.0	53.0	706179			
DN032	35.0 x 1.5	35.0	32.0	48.0	76.0	59.0	706180			
DN040	41.0 x 1.5	41.0	38.0	48.0	82.0	65.0	706181			
DN050	53.0 x 1.5	53.0	50.0	48.0	94.0	77.0	706182			
DN065	70.0 x 2.0	70.0	66.0	48.0	113.0	95.0	706183			
DN080	85.0 x 2.0	85.0	81.0	52.0	133.0	112.0	706184			
DN100	104.0 x 2.0	104.0	100.0	52.0	159.0	137.0	706185			
DN125	129.0 x 2.0	129.0	125.0	56.0	183.0	161.0	706186			
DN150	154.0 x 2.0	154.0	150.0	56.0	213.0	188.0	706187			

ISO	Abmessung dimension	A	B	C	D	LK	MB 1.4404			
DN008	13.5 x 1.6	13.5	10.3	48.0	54.0	37.0	707347			
DN010	17.2 x 1.6	17.2	14.0	48.0	59.0	42.0	707349			
DN015	21.3 x 1.6	21.3	18.1	48.0	62.0	45.0	706188			
DN020	26.9 x 1.6	26.9	23.7	48.0	69.0	52.0	706189			
DN025	33.7 x 2.0	33.7	29.7	48.0	74.0	57.0	706190			
DN032	42.4 x 2.0	42.4	38.4	48.0	82.0	65.0	705079			
DN040	48.3 x 2.0	48.3	44.3	48.0	88.0	71.0	706191			
DN050	60.3 x 2.0	60.3	56.3	48.0	103.0	85.0	705636			
DN065	76.1 x 2.0	76.1	72.1	48.0	125.0	104.0	706192			
DN080	88.9 x 2.3	88.9	84.3	52.0	137.0	116.0	706193			
DN100	114.3 x 2.3	114.3	109.7	52.0	168.0	146.0	706194			

ASME BPE	Abmessung dimension	A	B	C	D	LK	MB 1.4404			
DN 1/2"	12.7 x 1.65	12.7	9.4	48.0	54.0	37.0	709848			
DN 3/4"	19.05 x 1.65	19.05	15.75	48.0	59.0	42.0	709849			
DN 1"	25.4 x 1.65	25.4	22.1	48.0	66.0	49.0	706195			
DN 1 1/2"	38.1 x 1.65	38.1	34.8	48.0	79.0	62.0	706196			
DN 2"	50.8 x 1.65	50.8	47.5	48.0	92.0	75.0	706197			
DN 2 1/2"	63.5 x 1.65	63.5	60.2	48.0	107.0	89.0	706198			
DN 3"	76.2 x 1.65	76.2	72.9	48.0	125.0	104.0	706199			
DN 4"	101.6 x 2.11	101.6	97.38	52.0	157.0	135.0	706200			