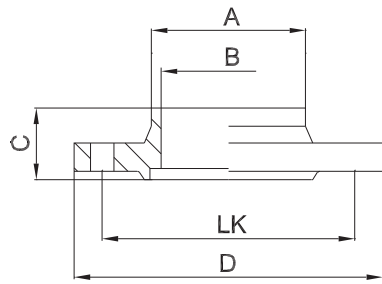




hygienic flange with groove



weitere Abmessungen auf Anfrage | further dimensions on request

zusätzliche Oberflächenqualitäten analog Seite | additional surface qualities analog page 33

DIN	Abmessung dimension	A	B	C	D	LK	MB 1.4404			
DN010	13.0 x 1.5	13.0	10.0	25.5	54.0	37.0	706202			
DN015	19.0 x 1.5	19.0	16.0	25.5	59.0	42.0	706203			
DN020	23.0 x 1.5	23.0	20.0	25.5	64.0	47.0	706204			
DN025	29.0 x 1.5	29.0	26.0	25.5	70.0	53.0	705658			
DN032	35.0 x 1.5	35.0	32.0	25.5	76.0	59.0	706205			
DN040	41.0 x 1.5	41.0	38.0	25.5	82.0	65.0	706206			
DN050	53.0 x 1.5	53.0	50.0	25.5	94.0	77.0	704494			
DN065	70.0 x 2.0	70.0	66.0	25.5	113.0	95.0	705035			
DN080	85.0 x 2.0	85.0	81.0	27.5	133.0	112.0	705677			
DN100	104.0 x 2.0	104.0	100.0	27.5	159.0	137.0	706207			
DN125	129.0 x 2.0	129.0	125.0	29.5	183.0	161.0	706208			
DN150	154.0 x 2.0	154.0	150.0	29.5	213.0	188.0	706209			

ISO	Abmessung dimension	A	B	C	D	LK	MB 1.4404			
DN008	13.5 x 1.6	13.5	10.3	25.5	54.0	37.0	707336			
DN010	17.2 x 1.6	17.2	14.0	25.5	59.0	42.0	707337			
DN015	21.3 x 1.6	21.3	18.1	25.5	62.0	45.0	706210			
DN020	26.9 x 1.6	26.9	23.7	25.5	69.0	52.0	706211			
DN025	33.7 x 2.0	33.7	29.7	25.5	74.0	57.0	706212			
DN032	42.4 x 2.0	42.4	38.4	25.5	82.0	65.0	706213			
DN040	48.3 x 2.0	48.3	44.3	25.5	88.0	71.0	706214			
DN050	60.3 x 2.0	60.3	56.3	25.5	103.0	85.0	706215			
DN065	76.1 x 2.0	76.1	72.1	25.5	125.0	104.0	706216			
DN080	88.9 x 2.3	88.9	84.3	27.5	137.0	116.0	706217			
DN100	114.3 x 2.3	114.3	109.7	27.5	168.0	146.0	706218			

ASME BPE	Abmessung dimension	A	B	C	D	LK	MB 1.4404			
DN 1/2"	12.7 x 1.65	12.7	9.4	25.5	54.0	37.0	709850			
DN 3/4"	19.05 x 1.65	19.05	15.75	25.5	59.0	42.0	709851			
DN 1"	25.4 x 1.65	25.4	22.1	25.5	66.0	49.0	706219			
DN 1 1/2"	38.1 x 1.65	38.1	34.8	25.5	79.0	62.0	706220			
DN 2"	50.8 x 1.65	50.8	47.5	25.5	92.0	75.0	706221			
DN 2 1/2"	63.5 x 1.65	63.5	60.2	25.5	107.0	89.0	706222			
DN 3"	76.2 x 1.65	76.2	72.9	25.5	125.0	104.0	706223			
DN 4"	101.6 x 2.11	101.6	97.38	27.5	157.0	135.0	706224			