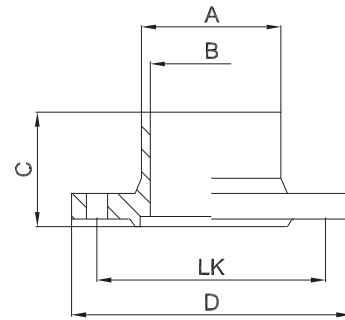




2.4.2 S Steril-Nutflansch DIN 11864-2-A

aseptic flange with groove



zusätzliche Oberflächenqualitäten analog Seite | additional surface qualities analog page 31

weitere Abmessungen auf Anfrage | further dimensions on request

DIN	Abmessung dimension	A	B	C	D	LK	MB 1.4435	e-pol. 1.4435	MB 1.4404	e-pol. 1.4404
DN010	13.0 x 1.5	13.0	10.0	41.5	54.0	37.0	703376	709601	704948	708847
DN015	19.0 x 1.5	19.0	16.0	41.5	59.0	42.0	703377	709602	705085	708848
DN020	23.0 x 1.5	23.0	20.0	41.5	64.0	47.0	703378	709603	705291	708849
DN025	29.0 x 1.5	29.0	26.0	41.5	70.0	53.0	703379	709604	705033	708850
DN032	35.0 x 1.5	35.0	32.0	46.5	76.0	59.0	703380	709605	705292	708851
DN040	41.0 x 1.5	41.0	38.0	46.5	82.0	65.0	703381	709606	705293	708852
DN050	53.0 x 1.5	53.0	50.0	46.5	94.0	77.0	703382	709607	705058	708853
DN065	70.0 x 2.0	70.0	66.0	55.5	113.0	95.0	703383	709608	705294	708854
DN080	85.0 x 2.0	85.0	81.0	59.5	133.0	112.0	703384	709609	703960	708855
DN100	104.0 x 2.0	104.0	100.0	59.5	159.0	137.0	703385	709610	703584	708856
DN125	129.0 x 2.0	129.0	125.0	61.5	183.0	161.0	703386	710176	705627	710181
DN150	154.0 x 2.0	154.0	150.0	61.5	213.0	188.0	706201	710177	703387	710182
DN200*	204.0 x 2.0	204.0	200.0	60.0	340.0	295.0	710173	710178	707942	710183
DN250*	254.0 x 2.0	254.0	250.0	68.0	405.0	355.0	710174	710179	707943	710184
DN300*	304.0 x 2.0	254.0	250.0	76.0	460.0	410.0	710175	710180	707944	710185

ISO	Abmessung dimension	A	B	C	D	LK	MB 1.4435	e-pol. 1.4435	MB 1.4404	e-pol. 1.4404
DN008	13.5 x 1.6	13.5	10.3	41.5	54.0	37.0	704297	707483	707334	707494
DN010	17.2 x 1.6	17.2	14.0	41.5	59.0	42.0	704662	707484	707335	707495
DN015	21.3 x 1.6	21.3	18.1	41.5	62.0	45.0	703388	707485	705301	707496
DN020	26.9 x 1.6	26.9	23.7	41.5	69.0	52.0	703389	707486	704976	707497
DN025	33.7 x 2.0	33.7	29.7	46.5	74.0	57.0	703390	707487	705302	707498
DN032	42.4 x 2.0	42.4	38.4	46.5	82.0	65.0	703391	707488	705303	707499
DN040	48.3 x 2.0	48.3	44.3	46.5	88.0	71.0	703392	707489	704947	707500
DN050	60.3 x 2.0	60.3	56.3	55.5	103.0	85.0	703393	707490	705304	707501
DN065	76.1 x 2.0	76.1	72.1	57.5	125.0	104.0	703394	707491	705305	707502
DN080	88.9 x 2.3	88.9	84.3	59.5	137.0	116.0	703395	707492	705306	707503
DN100	114.3 x 2.3	114.3	109.7	59.5	168.0	146.0	703396	707493	705307	707504
DN125*	139.7 x 2.6	139.7	134.5	53.0	250.0	210.0	708799	710189	707941	710194
DN150*	168.3 x 2.6	168.3	163.1	53.0	285.0	240.0	709029	710190	706735	710195
DN200*	219.1 x 2.6	219.1	213.9	60.0	340.0	295.0	710186	710191	706736	710196
DN250*	273.0 x 3.0	273.0	267.0	68.0	405.0	355.0	710187	710192	707945	710197
DN300*	323.9 x 3.0	323.9	317.9	76.0	460.0	410.0	710188	710193	707946	710198

ASME BPE	Abmessung dimension	A	B	C	D	LK	MB 1.4435	e-pol. 1.4435	MB 1.4404	e-pol. 1.4404
DN 1/2"	12.7 x 1.65	12.7	9.4	41.5	54.0	37.0	704663	710199	709770	710207
DN 3/4"	19.05 x 1.65	19.05	15.75	41.5	59.0	42.0	704664	710200	709771	710208
DN 1"	25.4 x 1.65	25.4	22.1	41.5	66.0	49.0	703397	710201	705295	708857
DN 1 1/2"	38.1 x 1.65	38.1	34.8	46.5	79.0	62.0	703398	710202	705296	708858
DN 2"	50.8 x 1.65	50.8	47.5	46.5	92.0	75.0	703400	710203	705297	708859
DN 2 1/2"	63.5 x 1.65	63.5	60.2	55.5	107.0	89.0	703399	710204	705298	710209
DN 3"	76.2 x 1.65	76.2	72.9	57.5	125.0	104.0	703401	710205	705299	710210
DN 4"	101.6 x 2.11	101.6	97.38	59.5	157.0	135.0	703402	710206	705300	710211

*) nicht in der DIN-Norm enthalten | non-standard