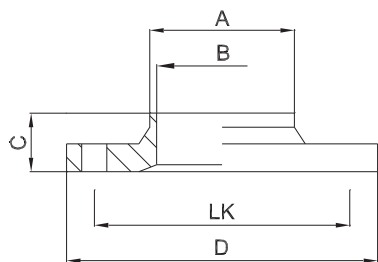




hygienic flange with collar



weitere Abmessungen auf Anfrage | further dimensions on request

zusätzliche Oberflächenqualitäten analog Seite | additional surface qualities analog page 33

DIN	Abmessung dimension	A	B	C	D	LK	MB 1.4404			
DN010	13.0 x 1.5	13.0	10.0	24.0	54.0	37.0	706226			
DN015	19.0 x 1.5	19.0	16.0	24.0	59.0	42.0	706227			
DN020	23.0 x 1.5	23.0	20.0	24.0	64.0	47.0	706228			
DN025	29.0 x 1.5	29.0	26.0	24.0	70.0	53.0	705659			
DN032	35.0 x 1.5	35.0	32.0	24.0	76.0	59.0	706229			
DN040	41.0 x 1.5	41.0	38.0	24.0	82.0	65.0	706230			
DN050	53.0 x 1.5	53.0	50.0	24.0	94.0	77.0	706231			
DN065	70.0 x 2.0	70.0	66.0	24.0	113.0	95.0	706232			
DN080	85.0 x 2.0	85.0	81.0	26.0	133.0	112.0	706233			
DN100	104.0 x 2.0	104.0	100.0	26.0	159.0	137.0	706234			
DN125	129.0 x 2.0	129.0	125.0	28.0	183.0	161.0	706235			
DN150	154.0 x 2.0	154.0	150.0	28.0	213.0	188.0	706236			

ISO	Abmessung dimension	A	B	C	D	LK	MB 1.4404			
DN008	13.5 x 1.6	13.5	10.3	24.0	54.0	37.0	707340			
DN010	17.2 x 1.6	17.2	14.0	24.0	59.0	42.0	707341			
DN015	21.3 x 1.6	21.3	18.1	24.0	62.0	45.0	706237			
DN020	26.9 x 1.6	26.9	23.7	24.0	69.0	52.0	706238			
DN025	33.7 x 2.0	33.7	29.7	24.0	74.0	57.0	706239			
DN032	42.4 x 2.0	42.4	38.4	24.0	82.0	65.0	706240			
DN040	48.3 x 2.0	48.3	44.3	24.0	88.0	71.0	706241			
DN050	60.3 x 2.0	60.3	56.3	24.0	103.0	85.0	706242			
DN065	76.1 x 2.0	76.1	72.1	24.0	125.0	104.0	706243			
DN080	88.9 x 2.3	88.9	84.3	26.0	137.0	116.0	706244			
DN100	114.3 x 2.3	114.3	109.7	26.0	168.0	146.0	706245			

ASME BPE	Abmessung dimension	A	B	C	D	LK	MB 1.4404			
DN 1/2"	12.7 x 1.65	12.7	9.4	24.0	54.0	37.0	709852			
DN 3/4"	19.05 x 1.65	19.05	15.75	24.0	59.0	42.0	709853			
DN 1"	25.4 x 1.65	25.4	22.1	24.0	66.0	49.0	706246			
DN 1 1/2"	38.1 x 1.65	38.1	34.8	24.0	79.0	62.0	706247			
DN 2"	50.8 x 1.65	50.8	47.5	24.0	92.0	75.0	706248			
DN 2 1/2"	63.5 x 1.65	63.5	60.2	24.0	107.0	89.0	706249			
DN 3"	76.2 x 1.65	76.2	72.9	24.0	125.0	104.0	706250			
DN 4"	101.6 x 2.11	101.6	97.38	26.0	157.0	135.0	706251			