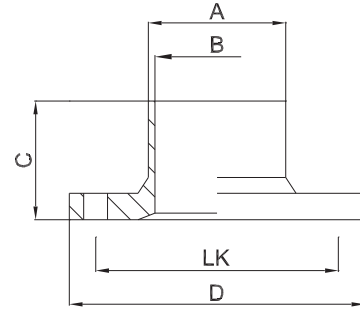




2.4.3 S Steril-Bundflansch DIN 11864-2-A

aseptic flange with collar



zusätzliche Oberflächenqualitäten analog Seite | additional surface qualities analog page 31

weitere Abmessungen auf Anfrage | further dimensions on request

DIN	Abmessung dimension	A	B	C	D	LK	MB 1.4435	e-pol. 1.4435	MB 1.4404	e-pol. 1.4404
DN010	13.0 x 1.5	13.0	10.0	40.0	54.0	37.0	703349	709611	704946	708834
DN015	19.0 x 1.5	19.0	16.0	40.0	59.0	42.0	703350	709612	705309	708835
DN020	23.0 x 1.5	23.0	20.0	40.0	64.0	47.0	703351	709613	705310	708836
DN025	29.0 x 1.5	29.0	26.0	40.0	70.0	53.0	703352	709614	705032	708837
DN032	35.0 x 1.5	35.0	32.0	45.0	76.0	59.0	703353	709615	705311	708838
DN040	41.0 x 1.5	41.0	38.0	45.0	82.0	65.0	703354	709616	704581	708839
DN050	53.0 x 1.5	53.0	50.0	45.0	94.0	77.0	703355	709617	705057	708840
DN065	70.0 x 2.0	70.0	66.0	54.0	113.0	95.0	703356	709618	705312	708841
DN080	85.0 x 2.0	85.0	81.0	58.0	133.0	112.0	703357	709619	704580	708842
DN100	104.0 x 2.0	104.0	100.0	58.0	159.0	137.0	703358	709620	705313	708843
DN125	129.0 x 2.0	129.0	125.0	60.0	183.0	161.0	703359	710215	705628	710220
DN150	154.0 x 2.0	154.0	150.0	60.0	213.0	188.0	703360	710216	706225	710221
DN200*	204.0 x 2.0	204.0	200.0	60.0	340.0	295.0	710212	710217	707936	710222
DN250*	254.0 x 2.0	254.0	250.0	68.0	405.0	355.0	710213	710218	707937	710223
DN300*	304.0 x 2.0	254.0	250.0	76.0	460.0	410.0	710214	710219	707938	710224

ISO	Abmessung dimension	A	B	C	D	LK	MB 1.4435	e-pol. 1.4435	MB 1.4404	e-pol. 1.4404
DN008	13.5 x 1.6	13.5	10.3	40.0	54.0	37.0	704298	707450	707338	707461
DN010	17.2 x 1.6	17.2	14.0	40.0	59.0	42.0	704659	707451	707339	707462
DN015	21.3 x 1.6	21.3	18.1	40.0	62.0	45.0	703361	707452	705314	707463
DN020	26.9 x 1.6	26.9	23.7	40.0	69.0	52.0	703362	707453	704977	707464
DN025	33.7 x 2.0	33.7	29.7	45.0	74.0	57.0	703363	707454	705315	707465
DN032	42.4 x 2.0	42.4	38.4	45.0	82.0	65.0	703364	707455	705316	707466
DN040	48.3 x 2.0	48.3	44.3	45.0	88.0	71.0	703365	707456	705317	707467
DN050	60.3 x 2.0	60.3	56.3	54.0	103.0	85.0	703366	707457	705318	707468
DN065	76.1 x 2.0	76.1	72.1	56.0	125.0	104.0	703367	707458	705319	707469
DN080	88.9 x 2.3	88.9	84.3	58.0	137.0	116.0	703368	707459	705320	707470
DN100	114.3 x 2.3	114.3	109.7	58.0	168.0	146.0	703369	707460	705321	707471
DN125*	139.7 x 2.6	139.7	134.5	53.0	250.0	210.0	708800	710228	707935	710233
DN150*	168.3 x 2.6	168.3	163.1	53.0	285.0	240.0	709106	710229	706733	710234
DN200*	219.1 x 2.6	219.1	213.9	60.0	340.0	295.0	710225	710230	706734	710235
DN250*	273.0 x 3.0	273.0	267.0	68.0	405.0	355.0	710226	710231	707939	710236
DN300*	323.9 x 3.0	323.9	317.9	76.0	460.0	410.0	710227	710232	707940	710237

ASME BPE	Abmessung dimension	A	B	C	D	LK	MB 1.4435	e-pol. 1.4435	MB 1.4404	e-pol. 1.4404
DN 1/2"	12.7 x 1.65	12.7	9.4	40.0	54.0	37.0	704661	710238	709772	710246
DN 3/4"	19.05 x 1.65	19.05	15.75	40.0	59.0	42.0	704660	710239	709773	710247
DN 1"	25.4 x 1.65	25.4	22.1	40.0	66.0	49.0	703370	710240	705322	708844
DN 1 1/2"	38.1 x 1.65	38.1	34.8	45.0	79.0	62.0	703371	710241	705323	708845
DN 2"	50.8 x 1.65	50.8	47.5	45.0	92.0	75.0	703372	710242	705324	708846
DN 2 1/2"	63.5 x 1.65	63.5	60.2	54.0	107.0	89.0	703373	710243	705325	710248
DN 3"	76.2 x 1.65	76.2	72.9	56.0	125.0	104.0	703374	710244	705326	710249
DN 4"	101.6 x 2.11	101.6	97.38	58.0	157.0	135.0	703375	710245	705327	710250

*) nicht in der DIN-Norm enthalten | non-standard