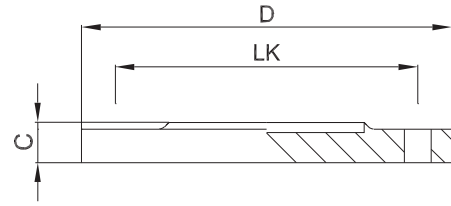




2.4.4 Blindnutflansch DIN 11864-2-A/DIN 11853-2

blind flange with groove



zusätzliche Oberflächenqualitäten analog Seite | additional surface qualities analog page 31

weitere Abmessungen auf Anfrage | further dimensions on request

DIN	Abmessung dimension	C	D	LK			MB 1.4435	e-pol. 1.4435	MB 1.4404	e-pol. 1.4404
DN010	13.0 x 1.5	11.5	54.0	37.0			703423	709651	705426	709626
DN015	19.0 x 1.5	11.5	59.0	42.0			703424	709652	705427	709627
DN020	23.0 x 1.5	11.5	64.0	47.0			703425	709653	705428	709628
DN025	29.0 x 1.5	11.5	70.0	53.0			703426	709654	705429	709629
DN032	35.0 x 1.5	11.5	76.0	59.0			703427	709655	705430	709630
DN040	41.0 x 1.5	11.5	82.0	65.0			703428	709656	704927	709631
DN050	53.0 x 1.5	11.5	94.0	77.0			703429	709657	704928	709632
DN065	70.0 x 2.0	11.5	113.0	95.0			703430	709658	705431	709633
DN080	85.0 x 2.0	13.5	133.0	112.0			703431	709659	705432	709634
DN100	104.0 x 2.0	15.5	159.0	137.0			703432	709660	705433	709635
DN125	129.0 x 2.0	15.5	183.0	161.0			706268	709661	705434	709636
DN150	154.0 x 2.0	17.5	213.0	188.0			706269	709662	705435	709637
DN200*	204.0 x 2.0	25.0	340.0	295.0			**	**	**	**
DN250*	254.0 x 2.0	25.0	405.0	355.0			**	**	**	**
DN300*	304.0 x 2.0	28.0	460.0	410.0			**	**	**	**

ISO	Abmessung dimension	C	D	LK			MB 1.4435	e-pol. 1.4435	MB 1.4404	e-pol. 1.4404
DN008	13.5 x 1.6	11.5	54.0	37.0			704697	709380	709786	709790
DN010	17.2 x 1.6	11.5	59.0	42.0			704696	709381	709787	709791
DN015	21.3 x 1.6	11.5	62.0	45.0			704695	709382	705436	709400
DN020	26.9 x 1.6	11.5	69.0	52.0			704694	709383	705437	709401
DN025	33.7 x 2.0	11.5	74.0	57.0			704693	709384	705438	709402
DN032	42.4 x 2.0	11.5	82.0	65.0			704692	709385	705439	709403
DN040	48.3 x 2.0	11.5	88.0	71.0			704691	709386	705440	709404
DN050	60.3 x 2.0	11.5	103.0	85.0			704497	709387	705441	709405
DN065	76.1 x 2.0	13.5	125.0	104.0			704498	709388	705442	709406
DN080	88.9 x 2.3	13.5	137.0	116.0			704499	709389	705443	709407
DN100	114.3 x 2.3	15.5	168.0	146.0			704698	709390	705444	709408
DN125*	139.7 x 2.6	23.0	250.0	210.0			**	**	**	**
DN150*	168.3 x 2.6	23.0	285.0	240.0			**	**	**	**
DN200*	219.1 x 2.6	25.0	340.0	295.0			**	**	**	**
DN250*	273.0 x 3.0	25.0	405.0	355.0			**	**	**	**
DN300*	323.9 x 3.0	28.0	460.0	410.0			**	**	**	**

ASME BPE	Abmessung dimension	C	D	LK			MB 1.4435	e-pol. 1.4435	MB 1.4404	e-pol. 1.4404
DN 1/2"	12.7 x 1.65	11.5	54.0	37.0			704684	710251	709776	710259
DN 3/4"	19.05 x 1.65	11.5	59.0	42.0			704685	710252	709777	710260
DN 1"	25.4 x 1.65	11.5	66.0	49.0			704686	710253	705447	710261
DN 1 1/2"	38.1 x 1.65	11.5	79.0	62.0			704687	710254	705448	710262
DN 2"	50.8 x 1.65	11.5	92.0	75.0			704688	710255	705449	710263
DN 2 1/2"	63.5 x 1.65	11.5	107.0	89.0			704699	710256	705450	710264
DN 3"	76.2 x 1.65	13.5	125.0	104.0			704689	710257	705451	710265
DN 4"	101.6 x 2.11	15.5	157.0	135.0			704690	710258	705452	710266

*) nicht in der DIN-Norm enthalten | non-standard

**) auf Anfrage | on request