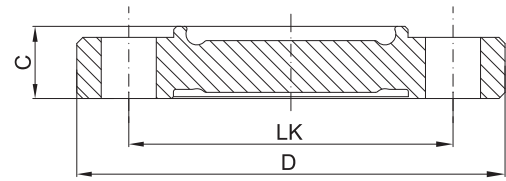




2.4.6 Flanschblende in Anlehnung an DIN 11864-2-A/DIN 11853-2

orifice flange following DIN 11864-2-A/DIN 11853-2



zusätzliche Oberflächenqualitäten analog Seite | additional surface qualities analog page 33

weitere Abmessungen auf Anfrage | further dimensions on request

DIN	Abmessung dimension	C	D	LK			MB 1.4435			
DN010	13.0 x 1.5	11.5	54.0	37.0			707792			
DN015	19.0 x 1.5	11.5	59.0	42.0			707793			
DN020	23.0 x 1.5	11.5	64.0	47.0			707794			
DN025	29.0 x 1.5	11.5	70.0	53.0			707795			
DN032	35.0 x 1.5	11.5	76.0	59.0			707796			
DN040	41.0 x 1.5	11.5	82.0	65.0			707797			
DN050	53.0 x 1.5	11.5	94.0	77.0			707695			
DN065	70.0 x 2.0	11.5	113.0	95.0			707798			
DN080	85.0 x 2.0	13.5	133.0	112.0			707799			
DN100	104.0 x 2.0	15.5	159.0	137.0			707800			

ISO	Abmessung dimension	C	D	LK			MB 1.4435			
DN008	13.5 x 1.6	11.5	54.0	37.0			707241			
DN010	17.2 x 1.6	11.5	59.0	42.0			707242			
DN015	21.3 x 1.6	11.5	62.0	45.0			707243			
DN020	26.9 x 1.6	11.5	69.0	52.0			707244			
DN025	33.7 x 2.0	11.5	74.0	57.0			707245			
DN032	42.4 x 2.0	11.5	82.0	65.0			707246			
DN040	48.3 x 2.0	11.5	88.0	71.0			707247			
DN050	60.3 x 2.0	11.5	103.0	85.0			707248			
DN065	76.1 x 2.0	13.5	125.0	104.0			707249			
DN080	88.9 x 2.3	13.5	137.0	116.0			707250			
DN100	114.3 x 2.3	15.5	168.0	146.0			707251			

ASME BPE	Abmessung dimension	C	D	LK			MB 1.4435			
DN 1/2"	12.7 x 1.65	11.5	54.0	37.0			708821			
DN 3/4"	19.05 x 1.65	11.5	59.0	42.0			708822			
DN 1"	25.4 x 1.65	11.5	66.0	49.0			708823			
DN 1 1/2"	38.1 x 1.65	11.5	79.0	62.0			708824			
DN 2"	50.8 x 1.65	11.5	92.0	75.0			708825			
DN 2 1/2"	63.5 x 1.65	11.5	107.0	89.0			708826			
DN 3"	76.2 x 1.65	13.5	125.0	104.0			708827			
DN 4"	101.6 x 2.11	15.5	157.0	135.0			708828			



Lieferung erfolgt ohne Drosselbohrung
delivered without throttling port