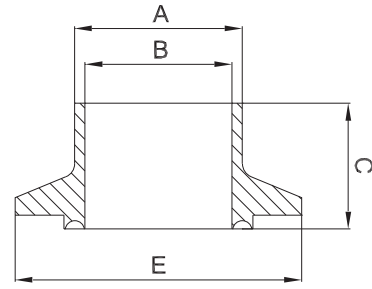




## 2.5.2 Steril-Clampstutzen -VS- STERI-Connect®

aseptic clamp -VS-



zusätzliche Oberflächenqualitäten analog Seite | additional surface qualities analog page 42

weitere Abmessungen auf Anfrage | further dimensions on request

DIN	Abmessung dimension	A	B	C	E	MB 1.4435			
DN006	8.0 x 1.0	8.0	6.0	35.0	Ø 25.0	700196			
DN008	10.0 x 1.0	10.0	8.0	35.0	Ø 25.0	705241			
DN010	12.0 x 1.0	12.0	10.0	35.0	Ø 25.0	700180			
DN010	13.0 x 1.5	13.0	10.0	35.0	Ø 25.0	709768			
DN015	19.0 x 1.5	19.0	16.0	35.0	Ø 25.0	700184			
DN020	23.0 x 1.5	23.0	20.0	35.0	Ø 50.5	700186			
DN025	29.0 x 1.5	29.0	26.0	39.0	Ø 50.5	700188			
DN032	35.0 x 1.5	35.0	32.0	39.0	Ø 50.5	700190			
DN040	41.0 x 1.5	41.0	38.0	39.0	Ø 64.0	700192			
DN050	53.0 x 1.5	53.0	50.0	39.0	Ø 77.5	700194			
DN065	70.0 x 2.0	70.0	66.0	49.0	Ø 91.0	700197			
DN080	85.0 x 2.0	85.0	81.0	49.0	Ø 106.0	700200			
DN100	104.0 x 2.0	104.0	100.0	49.0	Ø 119.0	700182			

ISO	Abmessung dimension	A	B	C	E	MB 1.4435			
DN008	13.5 x 1.6	13.5	10.3	35.0	Ø 25.0	700199			
DN010	17.2 x 1.6	17.2	14.0	35.0	Ø 25.0	700181			
DN015	21.3 x 1.6	21.3	18.1	35.0	Ø 50.5	700185			
DN020	26.9 x 1.6	26.9	23.7	35.0	Ø 50.5	700187			
DN025	33.7 x 2.0	33.7	29.7	39.0	Ø 50.5	700189			
DN032	42.4 x 2.0	42.4	38.4	39.0	Ø 50.5	700191			
DN040	48.3 x 2.0	48.3	44.3	39.0	Ø 64.0	700193			
DN050	60.3 x 2.0	60.3	56.3	39.0	Ø 77.5	700195			
DN065	76.1 x 2.0	76.1	72.1	49.0	Ø 91.0	700198			
DN080	88.9 x 2.3	88.9	84.3	49.0	Ø 106.0	700201			
DN100	114.3 x 2.3	114.3	109.7	49.0	Ø 130.0	700183			