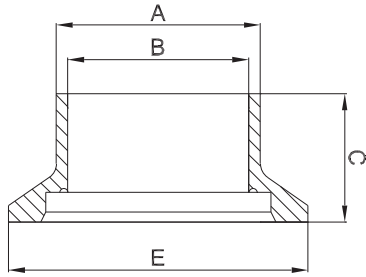




aseptic clamp -RS-



weitere Abmessungen auf Anfrage | further dimensions on request

zusätzliche Oberflächenqualitäten analog Seite | additional surface qualities analog page 42

DIN	Abmessung dimension	A	B	C	E		MB 1.4435			
DN006	8.0 x 1.0	8.0	6.0	35.0	Ø 25.0		705242			
DN008	10.0 x 1.0	10.0	8.0	35.0	Ø 25.0		700174			
DN010	12.0 x 1.0	12.0	10.0	35.0	Ø 25.0		700158			
DN010	13.0 x 1.5	13.0	10.0	35.0	Ø 25.0		709768			
DN015	19.0 x 1.5	19.0	16.0	35.0	Ø 25.0		700162			
DN020	23.0 x 1.5	23.0	20.0	35.0	Ø 50.5		700164			
DN025	29.0 x 1.5	29.0	26.0	39.0	Ø 50.5		700166			
DN032	35.0 x 1.5	35.0	32.0	39.0	Ø 50.5		700168			
DN040	41.0 x 1.5	41.0	38.0	39.0	Ø 64.0		700170			
DN050	53.0 x 1.5	53.0	50.0	39.0	Ø 77.5		700172			
DN065	70.0 x 2.0	70.0	66.0	49.0	Ø 91.0		700175			
DN080	85.0 x 2.0	85.0	81.0	49.0	Ø 106.0		700178			
DN100	104.0 x 2.0	104.0	100.0	49.0	Ø 119.0		700160			

ISO	Abmessung dimension	A	B	C	E		MB 1.4435			
DN008	13.5 x 1.6	13.5	10.3	35.0	Ø 25.0		700177			
DN010	17.2 x 1.6	17.2	14.0	35.0	Ø 25.0		700159			
DN015	21.3 x 1.6	21.3	18.1	35.0	Ø 50.5		700163			
DN020	26.9 x 1.6	26.9	23.7	35.0	Ø 50.5		700165			
DN025	33.7 x 2.0	33.7	29.7	39.0	Ø 50.5		700167			
DN032	42.4 x 2.0	42.4	38.4	39.0	Ø 50.5		700169			
DN040	48.3 x 2.0	48.3	44.3	39.0	Ø 64.0		700171			
DN050	60.3 x 2.0	60.3	56.3	39.0	Ø 77.5		700173			
DN065	76.1 x 2.0	76.1	72.1	49.0	Ø 91.0		700176			
DN080	88.9 x 2.3	88.9	84.3	49.0	Ø 106.0		700179			
DN100	114.3 x 2.3	114.3	109.7	49.0	Ø 130.0		700161			