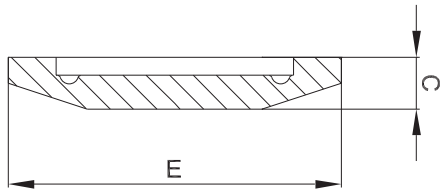




2.5.5 Steril-Blindclampstutzen -RS- STERI-Connect®

aseptic blind clamp -RS-



weitere Abmessungen auf Anfrage | further dimensions on request

zusätzliche Oberflächenqualitäten analog Seite | additional surface qualities analog page 42

DIN	Abmessung dimension	C	E				MB 1.4435			
DN006	8.0 x 1.0	7.5	Ø 25.0				700142			
DN008	10.0 x 1.0	7.5	Ø 25.0				700144			
DN010	12.0 x 1.0	7.5	Ø 25.0				700134			
DN010	13.0 x 1.5	7.5	Ø 25.0				709841			
DN015	19.0 x 1.5	7.5	Ø 25.0				700136			
DN020	23.0 x 1.5	9.0	Ø 50.5				700137			
DN025	29.0 x 1.5	9.0	Ø 50.5				700138			
DN032	35.0 x 1.5	9.0	Ø 50.5				700139			
DN040	41.0 x 1.5	9.0	Ø 64.0				700140			
DN050	53.0 x 1.5	9.0	Ø 77.5				700141			
DN065	70.0 x 2.0	9.0	Ø 91.0				700143			
DN080	85.0 x 2.0	11.0	Ø 106.0				700145			
DN100	104.0 x 2.0	11.0	Ø 119.0				700135			

ISO	Abmessung dimension	C	E				MB 1.4435			
DN008	13.5 x 1.6	7.5	Ø 25.0				704972			
DN010	17.2 x 1.6	7.5	Ø 25.0				704957			
DN015	21.3 x 1.6	7.5	Ø 50.5				703066			
DN020	26.9 x 1.6	9.0	Ø 50.5				705274			
DN025	33.7 x 2.0	9.0	Ø 50.5				705275			
DN032	42.4 x 2.0	9.0	Ø 50.5				705276			
DN040	48.3 x 2.0	9.0	Ø 64.0				705277			
DN050	60.3 x 2.0	9.0	Ø 77.5				703065			
DN065	76.1 x 2.0	9.0	Ø 91.0				705278			
DN080	88.9 x 2.3	11.0	Ø 106.0				705279			
DN100	114.3 x 2.3	11.0	Ø 130.0				705280			