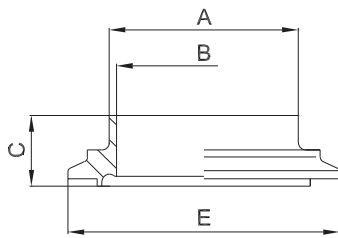




hygienic clamp with groove



zusätzliche Oberflächenqualitäten analog Seite | additional surface qualities analog page 50

weitere Abmessungen auf Anfrage | further dimensions on request

DIN	Abmessung dimension	A	B	C	E	MB 1.4404			
DN010	13.0 x 1.5	13.0	10.0	23.5	Ø 34.0	706127			
DN015	19.0 x 1.5	19.0	16.0	23.5	Ø 34.0	706128			
DN020	23.0 x 1.5	23.0	20.0	23.5	Ø 50.5	706129			
DN025	29.0 x 1.5	29.0	26.0	23.5	Ø 50.5	706130			
DN032	35.0 x 1.5	35.0	32.0	25.5	Ø 50.5	706131			
DN040	41.0 x 1.5	41.0	38.0	25.5	Ø 64.0	706132			
DN050	53.0 x 1.5	53.0	50.0	26.0	Ø 77.5	706133			
DN065	70.0 x 2.0	70.0	66.0	28.0	Ø 91.0	706134			
DN080	85.0 x 2.0	85.0	81.0	30.0	Ø 106.0	706135			
DN100	104.0 x 2.0	104.0	100.0	31.5	Ø 130.0	706136			
DN125*	129.0 x 2.0	129.0	125.0	31.5	Ø 155.0	710640			
DN150*	154.0 x 2.0	154.0	150.0	31.5	Ø 183.0	710641			
DN200*	204.0 x 2.0	204.0	200.0	31.5	Ø 233.5	709484			

ISO	Abmessung dimension	A	B	C	E	MB 1.4404			
DN008	13.5 x 1.6	13.5	10.3	23.5	Ø 34.0	706567			
DN010	17.2 x 1.6	17.2	14.0	23.5	Ø 34.0	706568			
DN015	21.3 x 1.6	21.3	18.1	23.5	Ø 34.0	706569			
DN020	26.9 x 1.6	26.9	23.7	23.5	Ø 50.5	706570			
DN025	33.7 x 2.0	33.7	29.7	25.5	Ø 50.5	706571			
DN032	42.4 x 2.0	42.4	38.4	25.5	Ø 64.0	706572			
DN040	48.3 x 2.0	48.3	44.3	26.5	Ø 64.0	706573			
DN050	60.3 x 2.0	60.3	56.3	28.5	Ø 91.0	706574			
DN065	76.1 x 2.0	76.1	72.1	30.0	Ø 106.0	706575			
DN080	88.9 x 2.3	88.9	84.3	32.5	Ø 119.0	706576			
DN100*	114.3 x 2.3	114.3	109.7	32.5	Ø 144.4	706577			

ASME BPE	Abmessung dimension	A	B	C	E	MB 1.4404			
DN 1/2"	12.7 x 1.65	12.7	9.4	23.5	Ø 34.0	710642			
DN 3/4"	19.05 x 1.65	19.05	15.75	23.5	Ø 34.0	710643			
DN 1"	25.4 x 1.65	25.4	22.1	23.5	Ø 50.5	710644			
DN 1 1/2"	38.1 x 1.65	38.1	34.8	25.5	Ø 64.0	710645			
DN 2"	50.8 x 1.65	50.8	47.5	26.0	Ø 77.5	710646			
DN 2 1/2"	63.5 x 1.65	63.5	60.2	29.0	Ø 91.0	710647			
DN 3"	76.2 x 1.65	76.2	72.9	30.0	Ø 106.0	710648			
DN 4"	101.6 x 2.11	101.6	97.38	31.0	Ø 130.0	710649			

*) nicht in der DIN-Norm enthalten | non-standard