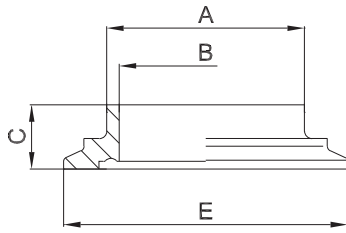




## 2.6.3 H Hygiene-Bundclampstutzen DIN 11853-3

hygienic clamp with collar



weitere Abmessungen auf Anfrage | further dimensions on request

zusätzliche Oberflächenqualitäten analog Seite | additional surface qualities analog page 50

DIN	Abmessung dimension	A	B	C	E	MB 1.4404			
DN010	13.0 x 1.5	13.0	10.0	22.0	Ø 34.0	706147			
DN015	19.0 x 1.5	19.0	16.0	22.0	Ø 34.0	706148			
DN020	23.0 x 1.5	23.0	20.0	22.0	Ø 50.5	706149			
DN025	29.0 x 1.5	29.0	26.0	22.0	Ø 50.5	706150			
DN032	35.0 x 1.5	35.0	32.0	24.0	Ø 50.5	706151			
DN040	41.0 x 1.5	41.0	38.0	24.0	Ø 64.0	706152			
DN050	53.0 x 1.5	53.0	50.0	24.5	Ø 77.5	706153			
DN065	70.0 x 2.0	70.0	66.0	26.5	Ø 91.0	706154			
DN080	85.0 x 2.0	85.0	81.0	28.5	Ø 106.0	706155			
DN100	104.0 x 2.0	104.0	100.0	30.0	Ø 130.0	706156			
DN125*	129.0 x 2.0	129.0	125.0	30.0	Ø 155.0	710651			
DN150*	154.0 x 2.0	154.0	150.0	30.0	Ø 183.0	710652			
DN200*	204.0 x 2.0	204.0	200.0	30.0	Ø 233.5	709485			

ISO	Abmessung dimension	A	B	C	E	MB 1.4404			
DN008	13.5 x 1.6	13.5	10.3	22.0	Ø 34.0	706589			
DN010	17.2 x 1.6	17.2	14.0	22.0	Ø 34.0	706590			
DN015	21.3 x 1.6	21.3	18.1	22.0	Ø 34.0	706591			
DN020	26.9 x 1.6	26.9	23.7	22.0	Ø 50.5	706592			
DN025	33.7 x 2.0	33.7	29.7	24.0	Ø 50.5	706593			
DN032	42.4 x 2.0	42.4	38.4	24.0	Ø 64.0	706594			
DN040	48.3 x 2.0	48.3	44.3	25.0	Ø 64.0	706595			
DN050	60.3 x 2.0	60.3	56.3	27.0	Ø 91.0	706596			
DN065	76.1 x 2.0	76.1	72.1	28.5	Ø 106.0	706597			
DN080	88.9 x 2.3	88.9	84.3	31.0	Ø 119.0	706598			
DN100*	114.3 x 2.3	114.3	109.7	31.0	Ø 144.4	706599			

ASME BPE	Abmessung dimension	A	B	C	E	MB 1.4404			
DN 1/2"	12.7 x 1.65	12.7	9.4	22.0	Ø 34.0	710653			
DN 3/4"	19.05 x 1.65	19.05	15.75	22.0	Ø 34.0	710654			
DN 1"	25.4 x 1.65	25.4	22.1	22.0	Ø 50.5	710655			
DN 1 1/2"	38.1 x 1.65	38.1	34.8	24.0	Ø 64.0	710656			
DN 2"	50.8 x 1.65	50.8	47.5	24.5	Ø 77.5	710657			
DN 2 1/2"	63.5 x 1.65	63.5	60.2	27.5	Ø 91.0	710658			
DN 3"	76.2 x 1.65	76.2	72.9	28.5	Ø 106.0	710659			
DN 4"	101.6 x 2.11	101.6	97.38	29.5	Ø 130.0	710660			

\*) nicht in der DIN-Norm enthalten | non-standard