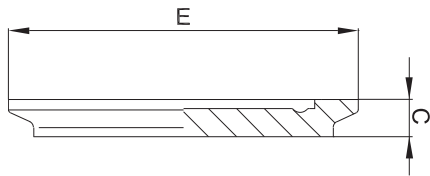




## 2.6.5 Blindbundclampstutzen DIN 11864-3-A/DIN 11853-3

blind clamp with collar



weitere Abmessungen auf Anfrage | further dimensions on request

zusätzliche Oberflächenqualitäten analog Seite | additional surface qualities analog page 48

DIN	Abmessung dimension	C	E				MB 1.4435	e-pol. 1.4435	MB 1.4404	e-pol. 1.4404
DN010	13.0 x 1.5	11.5	Ø 34.0				704795	709063	706167	710550
DN015	19.0 x 1.5	11.5	Ø 34.0				704796	710538	706168	710551
DN020	23.0 x 1.5	11.5	Ø 50.5				704797	710539	706169	710552
DN025	29.0 x 1.5	11.5	Ø 50.5				704798	709064	706170	710553
DN032	35.0 x 1.5	11.5	Ø 50.5				704799	710540	706171	710554
DN040	41.0 x 1.5	11.5	Ø 64.0				704800	710541	706172	710555
DN050	53.0 x 1.5	13.5	Ø 77.5				704801	710542	706173	710556
DN065	70.0 x 2.0	13.5	Ø 91.0				704802	710543	706174	710557
DN080	85.0 x 2.0	13.5	Ø 106.0				704803	710544	706175	710558
DN100	104.0 x 2.0	13.5	Ø 130.0				704804	710545	706176	710559
DN125*	129.0 x 2.0	15.5	Ø 155.0				710536	710546	710548	710560
DN150*	154.0 x 2.0	15.5	Ø 183.0				710537	710547	710549	710561

ISO	Abmessung dimension	C	E				MB 1.4435	e-pol. 1.4435	MB 1.4404	e-pol. 1.4404
DN008	13.5 x 1.6	11.5	Ø 34.0				704813	709116	706654	710599
DN010	17.2 x 1.6	11.5	Ø 34.0				704814	709431	706655	710600
DN015	21.3 x 1.6	11.5	Ø 34.0				704815	710585	706656	710601
DN020	26.9 x 1.6	11.5	Ø 50.5				704816	710586	706657	710602
DN025	33.7 x 2.0	11.5	Ø 50.5				704817	709065	706658	710603
DN032	42.4 x 2.0	11.5	Ø 64.0				704818	710587	706659	710604
DN040	48.3 x 2.0	11.5	Ø 64.0				704819	710588	706660	710605
DN050	60.3 x 2.0	13.5	Ø 91.0				704820	710589	706661	710606
DN065	76.1 x 2.0	13.5	Ø 106.0				704821	710590	706662	710607
DN080	88.9 x 2.3	13.5	Ø 119.0				704822	710591	706663	710608
DN100*	114.3 x 2.3	13.5	Ø 144.4				704823	710592	706664	710609
DN125*	139.7 x 2.6	15.5	Ø 155.0				710582	710593	710596	710610
DN150*	168.3 x 2.6	15.5	Ø 183.0				710583	710594	710597	710611
DN200*	219.1 x 2.6	15.5	Ø 233.5				710584	710595	710598	710612

ASME BPE	Abmessung dimension	C	E				MB 1.4435	e-pol. 1.4435	MB 1.4404	e-pol. 1.4404
DN 1/2"	12.7 x 1.65	11.5	Ø 34.0				704805	710613	709698	710621
DN 3/4"	19.05 x 1.65	11.5	Ø 34.0				704806	710614	709699	710622
DN 1"	25.4 x 1.65	11.5	Ø 50.5				704807	710615	709700	710623
DN 1 1/2"	38.1 x 1.65	11.5	Ø 64.0				704808	710616	709701	710624
DN 2"	50.8 x 1.65	13.5	Ø 77.5				704809	710617	709702	710625
DN 2 1/2"	63.5 x 1.65	13.5	Ø 91.0				704810	710618	709703	710626
DN 3"	76.2 x 1.65	13.5	Ø 106.0				704811	710619	709704	710627
DN 4"	101.6 x 2.11	13.5	Ø 130.0				704812	710620	709705	710628

\*) nicht in der DIN-Norm enthalten | non-standard