

Legende

- A Außendurchmesser
- B Innendurchmesser
- C Gesamtlänge
- E (Clamp-) Flansch-Außendurchmesser

Abmessungen

- DIN 11866-A (DIN 11850)
- DIN 11866-B (EN ISO 1127)
- DIN 11866-C (ASME BPE)

Normative Verweisungen, Anforderungen / Abnahmen (Vormaterial)

- DIN 32676
- BN2 (gültig für Bauteile in 1.4435)
- EN 10088-1/-3
- EN 10204
- EN 10222-5 (Rohlinge)
- EN 10254 (Rohlinge)
- EN 10272
- ASTM A276
- ASTM A182/A182M / ASME SA182/SA182M
- ASTM A479/A479M / ASME SA479/SA479M
- ASME SA336 (Rohlinge)
- AD 2000-W2

Kennzeichnung

Hersteller, Werkstoff, Abmessung, Schmelze, DIN 32676

Toleranzen (Bezugsnorm)

DIN 32676 / ISO 2768-1

Verpackung

Schweißenden mit Kunststoffkappen verschlossen, einzeln verpackt.

Werkstoffe

- 1.4435 / 1.4404 (mediumberührt)
- 1.4301/08 (nicht mediumberührt)
- EPDM (Standard)

weitere Werkstoffe auf Anfrage

Oberflächenbeschaffenheit ("MB")

innen: feinstgedreht, Ra < 0.8 µm
 außen: feingedreht, Ra < 1.6 µm

Key

- external diameter
- internal diameter
- total length
- outer (clamp) flange diameter

Dimensions

- DIN 11866-A (DIN 11850)
- DIN 11866-B (EN ISO 1127)
- DIN 11866-C (ASME BPE)

Normative References, Requirements / Approvals (raw material)

- DIN 32676
- BN2 (valid for components in 1.4435)
- EN 10088-1/-3
- EN 10204
- EN 10222-5 (forgings)
- EN 10254 (forgings)
- EN 10272
- ASTM A276
- ASTM A182/A182M / ASME SA182/SA182M
- ASTM A479/A479M / ASME SA479/SA479M
- ASME SA336 (forgings)
- AD 2000-W2

Marking

manufacturer, material, dimension, heat, DIN 32676

Tolerances (reference standard)

DIN 32676 / ISO 2768-1

Packaging

Welding ends covered with plastic caps, wrapped separately.

Materials

- 316L (at medium contact surface)
- 304 (not at medium contact surface)
- EPDM (standard)

further materials on request

Surface condition ("MB")

inside: ultra-fine turned, Ra < 0.8 µm
 outside: refined turned, Ra < 1.6 µm



Oberflächenqualitäten | surface qualities

Innenoberfläche internal surface finish	(Zusatz-) Artikel-Nr. (additional) order No
e-poliert e-polished	999277
Ra < 0.6 µm (STERI-line®)	999279
Ra < 0.5 µm (STERI-line®)	999280
Ra < 0.4 µm (HQ-line®)	999281
Ra < 0.25 µm (HQ-line®)	999283

Bestellbeispiel | ordering example

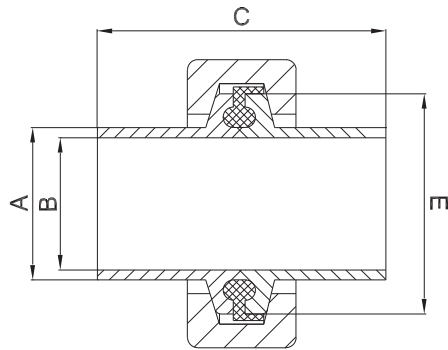
Artikelbezeichnung + Ausführungen article description + variants	Artikel-Nr. order No
Clampverbindung DN025 ISO (1.4404, EPDM) clamp connection -long type- DIN 32676	711979
e-poliert e-polished	+ 999277
Ra < 0.4 µm	+ 999281



Zubehör ab Seite 78 | accessories from page 78 on



2.7.1 Clampverbindung DIN 32676



weitere Abmessungen auf Anfrage | further dimensions on request

DIN	Abmessung dimension	A	B	C	MB 1.4435	e-pol. 1.4435	E	C	MB 1.4404	C	MB 1.4404
DN004*	6.0 x 1.0	6.0	4.0	57.2	708678	708935	Ø 25.0	XXX	XXX	XXX	XXX
DN004*	6.0 x 1.0	6.0	4.0	58.9	708679	708936	Ø 34.0	XXX	XXX	XXX	XXX
DN006	8.0 x 1.0	8.0	6.0	57.2	707278	708937	Ø 25.0	57.2	**	25.4	**
DN006*	8.0 x 1.0	8.0	6.0	58.9	707280	708938	Ø 34.0	XXX	XXX	XXX	XXX
DN008	10.0 x 1.0	10.0	8.0	57.2	707282	708939	Ø 25.0	57.2	**	25.4	**
DN008*	10.0 x 1.0	10.0	8.0	58.9	707284	708940	Ø 34.0	XXX	XXX	XXX	XXX
DN010*	12.0 x 1.0	12.0	10.0	57.2	707290	708941	Ø 25.0	XXX	XXX	XXX	XXX
DN010*	12.0 x 1.0	12.0	10.0	71.7	705667	708942	Ø 34.0	58.9	711946	37.7	705965
DN010*	12.0 x 1.0	12.0	10.0	73.7	711947	711948	Ø 50.5	XXX	XXX	XXX	XXX
DN010*	13.0 x 1.5	13.0	10.0	57.2	711949	711950	Ø 25.0	XXX	XXX	XXX	XXX
DN010	13.0 x 1.5	13.0	10.0	58.9	700931	708943	Ø 34.0	58.9	711573	37.7	705966
DN010*	13.0 x 1.5	13.0	10.0	73.7	711951	711952	Ø 50.5	XXX	XXX	XXX	XXX
DN015*	19.0 x 1.5	19.0	16.0	57.2	711953	711954	Ø 25.0	XXX	XXX	XXX	XXX
DN015	19.0 x 1.5	19.0	16.0	58.9	700932	708944	Ø 34.0	58.9	709079	37.7	705967
DN015*	19.0 x 1.5	19.0	16.0	73.7	707291	708945	Ø 50.5	XXX	XXX	XXX	XXX
DN020	23.0 x 1.5	23.0	20.0	58.9	700933	708946	Ø 34.0	58.9	711574	37.7	705968
DN020*	23.0 x 1.5	23.0	20.0	73.7	711955	711956	Ø 50.5	XXX	XXX	XXX	XXX
DN025	29.0 x 1.5	29.0	26.0	73.7	700934	708947	Ø 50.5	58.9*	709080	44.7	705969
DN032	35.0 x 1.5	35.0	32.0	73.7	700935	708948	Ø 50.5	58.9*	711957	44.7	705970
DN040	41.0 x 1.5	41.0	38.0	73.7	700936	708949	Ø 50.5	58.9*	711426	44.7	705971
DN050	53.0 x 1.5	53.0	50.0	73.7	700937	708950	Ø 64.0	58.9*	711427	44.7	705972
DN065	70.0 x 2.0	70.0	66.0	97.7	700938	708951	Ø 91.0	97.7	**	57.7	705973
DN080	85.0 x 2.0	85.0	81.0	97.7	700939	708952	Ø 106.0	97.7	**	57.7	705974
DN100	104.0 x 2.0	104.0	100.0	97.7	700940	708953	Ø 119.0	97.7	**	57.7	705975
DN125	129.0 x 2.0	129.0	125.0	133.7	706082	711958	Ø 155.0	133.7	**	57.7	706085
DN150	154.0 x 2.0	154.0	150.0	133.7	706083	711959	Ø 183.0	133.7	**	57.7	706086
DN200	204.0 x 2.0	204.0	200.0	133.7	706084	711960	Ø 233.5	133.7	**	57.7	706087

*) nicht in der DIN-Norm enthalten | non-standard

***) auf Anfrage | on request

ISO	Abmessung dimension	A	B	C	MB 1.4435	e-pol. 1.4435	E	C	MB 1.4404	C	MB 1.4404
DN008	13.5 x 1.6	13.5	10.3	57.2	707286	708954	Ø 25.0	57.2	711971	25.4	711990
DN008*	13.5 x 1.6	13.5	10.3	58.9	705487	708955	Ø 34.0	58.9	711972	37.7	705976
DN008*	13.5 x 1.6	13.5	10.3	73.7	711961	711962	Ø 50.5	XXX	XXX	XXX	XXX
DN010	17.2 x 1.6	17.2	14.0	57.2	707287	708956	Ø 25.0	57.2	711973	25.4	711991
DN010*	17.2 x 1.6	17.2	14.0	58.9	702431	708957	Ø 34.0	58.9	711974	37.7	705977
DN010*	17.2 x 1.6	17.2	14.0	73.7	711963	711964	Ø 50.5	58.9	711975	37.7	711992
DN015*	21.3 x 1.6	21.3	18.1	58.9	702439	708958	Ø 34.0	58.9	711976	37.7	705978
DN015	21.3 x 1.6	21.3	18.1	73.7	707288	708959	Ø 50.5	58.9*	711977	44.7	711993
DN020	26.9 x 1.6	26.9	23.7	73.7	702438	708960	Ø 50.5	58.9*	711978	44.7	705979
DN025	33.7 x 2.0	33.7	29.7	73.7	702437	708961	Ø 50.5	58.9*	711979	44.7	705980
DN032*	42.4 x 2.0	42.4	38.4	73.7	702436	708962	Ø 50.5	58.9	711980	44.7	705981
DN032	42.4 x 2.0	42.4	38.4	73.7	707289	708963	Ø 64.0	58.9*	711981	44.7	711994



2.7.1 Clampverbindung DIN 32676

zusätzliche Oberflächenqualitäten analog Seite | additional surface qualities analog page 58

clamp connection

ISO	Abmessung dimension	A	B	C	MB 1.4435	e-pol. 1.4435	E	C	MB 1.4404	C	MB 1.4404
DN040	48.3 x 2.0	48.3	44.3	73.7	702435	708964	Ø 64.0	58.9*	711982	44.7	705982
DN050	60.3 x 2.0	60.3	56.3	73.7	702434	708965	Ø 77.5	73.7	711983	57.7	705983
DN065	76.1 x 2.0	76.1	72.1	97.7	702433	708966	Ø 91.0	97.7	711984	57.7	705984
DN080	88.9 x 2.3	88.9	84.3	97.7	702432	708967	Ø 106.0	97.7	711985	57.7	705985
DN100	114.3 x 2.3	114.3	109.7	97.7	702440	708968	Ø 130.0	97.7	711986	57.7	705986
DN125	139.7 x 2.6	139.7	134.5	133.7	711965	711966	Ø 155.0	133.7	711987	57.7	712118
DN150	168.3 x 2.6	168.3	163.1	133.7	711967	711968	Ø 183.0	133.7	711988	57.7	711995
DN200	219.1 x 2.6	219.1	213.9	133.7	711969	711970	Ø 233.5	133.7	711989	57.7	711996

ASME BPE	Abmessung dimension	A	B	C	MB 1.4435	e-pol. 1.4435	E	C	MB 1.4404	C	MB 1.4404
DN ¼"	6.35 x 0.89	6.35	4.57	57.2	711997	712000	Ø 25.0	57.2	712011	25.4	712017
DN ⅜"	9.53 x 0.89	9.53	7.75	57.2	711998	712001	Ø 25.0	57.2	712012	25.4	712018
DN ½"	12.7 x 1.65	12.7	9.4	57.2	703987	712002	Ø 25.0	57.2	707294	25.4	705987
DN ¾"	19.05 x 1.65	19.05	15.75	57.2	703988	712003	Ø 25.0	57.2	707295	25.4	705988
DN 1"	25.4 x 1.65	25.4	22.1	73.7	703989	712004	Ø 50.5	58.9*	707296	44.7	705989
DN 1½"	38.1 x 1.65	38.1	34.8	73.7	703990	712005	Ø 50.5	58.9*	707297	44.7	705990
DN 2"	50.8 x 1.65	50.8	47.5	73.7	703991	712006	Ø 64.0	73.7	707298	57.7*	705991
DN 2½"	63.5 x 1.65	63.5	60.2	73.7	703992	712007	Ø 77.5	73.7	712013	57.7	705992
DN 3"	76.2 x 1.65	76.2	72.9	97.7	705489	712008	Ø 91.0	97.7	712014	57.7	705993
DN 4"	101.6 x 2.11	101.6	97.38	97.7	705490	712009	Ø 119.0	97.7	712015	57.7	705994
DN 6"	152.4 x 2.77	152.4	146.86	133.7	711999	712010	Ø 167.0	133.7	712016	39.9*	712019

*) nicht in der DIN-Norm enthalten | non-standard