



2.8 Nippel-SO (ähnlich | similar) DIN 2982

orbitalschweißfähig | for orbital welding

nipple

Legende

- A Außendurchmesser
- B Innendurchmesser
- C Gesamtlänge
- E Gewinde

Abmessungen

- DIN 11866-A (DIN 11850)
- DIN 11866-B (EN ISO 1127)
- DIN 11866-C (ASME BPE)

Normative Verweisungen, Anforderungen / Abnahmen (Vormaterial)

- BN2
- EN 10088-1/-3
- EN 10204
- EN 10272
- ASTM A276
- ASTM A182/A182M / ASME SA182/SA182M
- ASTM A479/A479M / ASME SA479/SA479M
- AD 2000-W2

Kennzeichnung

Hersteller, Werkstoff, Abmessung, Schmelze

Toleranzen (Bezugsnorm)

ISO 2768-1

Verpackung

Anschlüsse mit Kunststoffkappen verschlossen, einzeln verpackt.

Werkstoffe

1.4435

weitere Werkstoffe auf Anfrage

Oberflächenbeschaffenheit ("MB")

innen: feinstgedreht, Ra < 0.8 µm
 außen: feingedreht, Ra < 1.6 µm

Key

- external diameter
- internal diameter
- total length
- thread

Dimensions

- DIN 11866-A (DIN 11850)
- DIN 11866-B (EN ISO 1127)
- DIN 11866-C (ASME BPE)

Normative References, Requirements / Approvals (raw material)

- BN2
- EN 10088-1/-3
- EN 10204
- EN 10272
- ASTM A276
- ASTM A182/A182M / ASME SA182/SA182M
- ASTM A479/A479M / ASME SA479/SA479M
- AD 2000-W2

Marking

manufacturer, material, dimension, heat

Tolerances (reference standard)

ISO 2768-1

Packaging

Connecting ends covered with plastic caps, wrapped separately.

Materials

316L

further materials on request

Surface condition ("MB")

inside: ultra-fine turned, Ra < 0.8 µm
 outside: refined turned, Ra < 1.6 µm

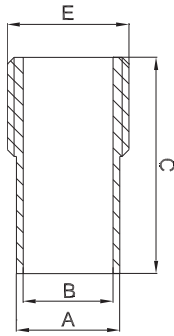


Oberflächenqualitäten | surface qualities

Innenoberfläche internal surface finish	(Zusatz-) Artikel-Nr. (additional) order No
e-poliert e-polished	999277
Ra < 0.6 µm (STERI-line®)	999279
Ra < 0.5 µm (STERI-line®)	999280
Ra < 0.4 µm (HQ-line®)	999281
Ra < 0.25 µm (HQ-line®)	999283

Bestellbeispiel | ordering example

Artikelbezeichnung + Ausführungen article description + variants	Artikel-Nr. order No
Nippel-SO DN025 ISO G 1" (1.4435) nipple	703982
e-poliert e-polished	+ 999277
Ra < 0.6 µm	+ 999279



weitere Abmessungen auf Anfrage | further dimensions on request

DIN	Abmessung dimension	A	B	C	E	MB 1.4435
DN010	12.0 x 1.0	12.0	10.0	40.0	1/8"	704323
DN010	12.0 x 1.0	12.0	10.0	40.0	1/4"	701327
DN010	13.0 x 1.5	13.0	10.0	40.0	1/8"	705078
DN010	13.0 x 1.5	13.0	10.0	40.0	1/4"	709140
DN010	13.0 x 1.5	13.0	10.0	40.0	3/8"	709105
DN015	19.0 x 1.5	19.0	16.0	50.0	1/4"	704011
DN015	19.0 x 1.5	19.0	16.0	50.0	3/8"	701328
DN015	19.0 x 1.5	19.0	16.0	50.0	1/2"	701330
DN015	19.0 x 1.5	19.0	16.0	50.0	3/4"	705646
DN020	23.0 x 1.5	23.0	20.0	50.0	3/4"	701329
DN025	29.0 x 1.5	29.0	26.0	50.0	3/4"	704267
DN025	29.0 x 1.5	29.0	26.0	50.0	1"	701331
DN032	35.0 x 1.5	35.0	32.0	58.0	1 1/4"	701332
DN040	41.0 x 1.5	41.0	38.0	55.0	1 1/2"	701333
DN050	53.0 x 1.5	53.0	50.0	58.0	2"	701334
DN065	70.0 x 2.0	70.0	66.0	58.0	2 1/2"	701335
DN080	85.0 x 2.0	85.0	81.0	58.0	3"	701336
DN100	104.0 x 2.0	104.0	100.0	58.0	4"	701337

ISO	Abmessung dimension	A	B	C	E	MB 1.4435
DN008	13.5 x 1.6	13.5	10.3	40.0	1/4"	703978
DN008	13.5 x 1.6	13.5	10.3	40.0	3/8"	704077
DN010	17.2 x 1.6	17.2	14.0	40.0	1/4"	704990
DN010	17.2 x 1.6	17.2	14.0	40.0	3/8"	703979
DN015	21.3 x 1.6	21.3	18.1	40.0	3/8"	704570
DN015	21.3 x 1.6	21.3	18.1	40.0	1/2"	703980
DN015	21.3 x 1.6	21.3	18.1	50.0	3/4"	704569
DN020	26.9 x 1.6	26.9	23.7	58.0	3/4"	703981
DN025	33.7 x 2.0	33.7	29.7	45.0	1/2"	704359
DN025	33.7 x 2.0	33.7	29.7	49.0	1"	703982
DN032	42.4 x 2.0	42.4	38.4	58.0	1 1/4"	703983
DN040	48.3 x 2.0	48.3	44.3	55.0	1 1/2"	703984
DN050	60.3 x 2.0	60.3	56.3	58.0	2"	703985
DN065	76.1 x 2.0	76.1	72.1	58.0	2 1/2"	703986
DN080	88.9 x 2.3	88.9	84.3	58.0	3"	705453
DN100	114.3 x 2.3	114.3	109.7	58.0	4"	705454

ASME BPE	Abmessung dimension	A	B	C	E	MB 1.4435
DN 1/2"	12.7 x 1.65	12.7	9.4	40.0	1/4"	705370
DN 3/4"	19.05 x 1.65	19.05	15.75	40.0	1/2"	705371
DN 1"	25.4 x 1.65	25.4	22.1	45.0	3/4"	705372
DN 1 1/2"	38.1 x 1.65	38.1	34.8	55.0	1 1/2"	705373
DN 2"	50.8 x 1.65	50.8	47.5	58.0	2"	705374
DN 2 1/2"	63.5 x 1.65	63.5	60.2	58.0	2 1/2"	705375
DN 3"	76.2 x 1.65	76.2	72.9	58.0	3"	705376
DN 4"	101.6 x 2.11	101.6	97.38	58.0	4"	705377

Anschweißnippel in Standard-Ausführung sind ebenfalls lieferbar | nipples for welding in standard version are also consignable