



5.4 STERI-TKR® / HQ-TKR® DIN 11865-TK

Steril T-Stück -kurz/reduziert-

aseptic tee -short/reduced-

Legende

- A Außendurchmesser (Durchgang)
- B Innendurchmesser (Durchgang)
- A1 Außendurchmesser (Abzweig)
- B1 Innendurchmesser (Abzweig)
- C Gesamtlänge
- D Länge Abgang

Abmessungen

- DIN 11866-A (DIN 11850)
- DIN 11866-B (EN ISO 1127)
- DIN 11866-C (ASME BPE)

Normative Verweisungen, Anforderungen / Abnahmen (Vormaterial)

- DIN 11865
- DIN 11866
- BN2
- EN 10088-1
- EN 10204
- ASTM A269 / A270
- ASME BPE
- ASME SA249/SA249M
- AD 2000-W2

Kennzeichnung

Hersteller, Werkstoff, Abmessung, Schmelze, DIN 11865

Toleranzen (Bezugsnorm)

DIN 11865 / EN ISO 1127

Verpackung

Schweißenden mit Kunststoffkappen verschlossen, einzeln verpackt.

Werkstoffe

1.4435

weitere Werkstoffe auf Anfrage

Oberflächenbeschaffenheit

	STERI line	MB H2 Ra > 0.8 µm	K400 H3o Ra < 0.8 µm	e-pol. HE3o Ra < 0.5-0.8 µm
innen metallblank				
innen geschliffen				
innen e-poliert				
außen metallblank				
außen geschliffen				

Key

- external diameter (main tube)
- internal diameter (main tube)
- external diameter (branch)
- internal diameter (branch)
- total length
- length of the branch

Dimensions

- DIN 11866-A (DIN 11850)
- DIN 11866-B (EN ISO 1127)
- DIN 11866-C (ASME BPE)

Normative References, Requirements / Approvals (raw material)

- DIN 11865
- DIN 11866
- BN2
- EN 10088-1
- EN 10204
- ASTM A269 / A270
- ASME BPE
- ASME SA249/SA249M
- AD 2000-W2

Marking

manufacturer, material, dimension, heat, DIN 11865

Tolerances (reference standard)

DIN 11865 / EN ISO 1127

Packaging

Welding ends covered with plastic caps, wrapped separately.

Materials

316L

further materials on request

Surface condition

	HQ line	K400 H4o Ra < 0.4 µm	e-pol. HE5o Ra < 0.25 µm
inside bright finish			
inside mech. polished			
inside e-polished			
outside bright finish			
outside mech. polished			

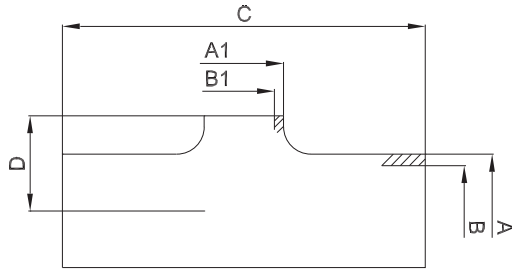


Oberflächenqualitäten | surface qualities

Innenoberfläche internal surface finish	(Zusatz-) Artikel-Nr. (additional) order No
Ra < 0.6 µm (STERI-line®)	999279
Ra < 0.5 µm (STERI-line®)	999280
Ra < 0.4 µm (HQ-line®)	999281
Ra < 0.25 µm (HQ-line®)	999283

Bestellbeispiel | ordering example

Artikelbezeichnung + Ausführungen article description + variants	Artikel-Nr. order No
HQ-TKR® DN025/015 DIN (1.4435) DIN 11865-TK aseptic tee -short/reduced-	708348
e-polier e-polished	
Ra < 0.4 µm	+ 999281



weitere Abmessungen auf Anfrage | further dimensions on request

DIN	A	B	A1	B1	C	D	STERI-line®			HQ-line®
							MB	K400	e-pol.	
DN015/DN008	19.0	16.0	10.0	8.0	70.0	11.0	711777	711778	711779	**
DN015/DN010	19.0	16.0	13.0	10.0	70.0	11.0	706354	708301	708344	**
DN020/DN008*	23.0	20.0	10.0	8.0	80.0	13.0	711780	711781	709531	**
DN020/DN010	23.0	20.0	13.0	10.0	80.0	13.0	706358	708302	708345	**
DN020/DN015	23.0	20.0	19.0	16.0	80.0	13.0	702739	708303	708346	**
DN025/DN008*	29.0	26.0	10.0	8.0	100.0	16.0	711782	711783	711784	**
DN025/DN010*	29.0	26.0	13.0	10.0	100.0	16.0	706362	708304	708058	**
DN025/DN015	29.0	26.0	19.0	16.0	100.0	16.0	702744	708305	708348	**
DN025/DN020	29.0	26.0	23.0	20.0	100.0	16.0	702746	708306	708207	**
DN032/DN008*	35.0	32.0	10.0	8.0	110.0	19.0	711785	711786	711787	**
DN032/DN010*	35.0	32.0	13.0	10.0	110.0	19.0	706366	708307	708057	**
DN032/DN015	35.0	32.0	19.0	16.0	110.0	19.0	702751	708308	708351	**
DN032/DN020	35.0	32.0	23.0	20.0	110.0	19.0	702753	708309	708352	**
DN032/DN025	35.0	32.0	29.0	26.0	110.0	19.0	702755	708310	708353	**
DN040/DN008*	41.0	38.0	10.0	8.0	120.0	22.0	706080	711788	711789	**
DN040/DN010*	41.0	38.0	13.0	10.0	120.0	22.0	706370	708311	708354	**
DN040/DN015*	41.0	38.0	19.0	16.0	120.0	22.0	702759	708312	708355	**
DN040/DN020	41.0	38.0	23.0	20.0	120.0	22.0	702761	708313	708356	**
DN040/DN025	41.0	38.0	29.0	26.0	120.0	22.0	702763	708314	708357	**
DN040/DN032	41.0	38.0	35.0	32.0	120.0	22.5	702765	708315	708358	**
DN050/DN008*	53.0	50.0	10.0	8.0	160.0	28.0	703175	711790	711791	**
DN050/DN010*	53.0	50.0	13.0	10.0	160.0	28.0	706374	708316	708359	**
DN050/DN015*	53.0	50.0	19.0	16.0	160.0	28.0	702767	708317	708360	**
DN050/DN020*	53.0	50.0	23.0	20.0	160.0	28.0	702769	708318	708361	**
DN050/DN025	53.0	50.0	29.0	26.0	160.0	28.0	702771	708319	708362	**
DN050/DN032	53.0	50.0	35.0	32.0	160.0	28.5	702773	708320	708363	**
DN050/DN040	53.0	50.0	41.0	38.0	160.0	29.0	702776	708321	708364	**
DN065/DN010*	70.0	66.0	13.0	10.0	210.0	37.0	706353	708322	708365	**
DN065/DN015*	70.0	66.0	19.0	16.0	210.0	37.0	706524	708323	708366	**
DN065/DN020*	70.0	66.0	23.0	20.0	210.0	37.0	702779	708324	708367	**
DN065/DN025*	70.0	66.0	29.0	26.0	210.0	37.0	702781	708325	708368	**
DN065/DN032	70.0	66.0	35.0	32.0	210.0	37.0	702783	708326	708369	**
DN065/DN040	70.0	66.0	41.0	38.0	210.0	37.5	702785	708327	708370	**
DN065/DN050	70.0	66.0	53.0	50.0	210.0	38.5	702787	708328	708371	**
DN080/DN010*	85.0	81.0	13.0	10.0	260.0	45.0	711792	709288	709289	**
DN080/DN015*	85.0	81.0	19.0	16.0	260.0	45.0	706881	708329	708372	**
DN080/DN020*	85.0	81.0	23.0	20.0	260.0	45.0	706775	708330	708373	**
DN080/DN025*	85.0	81.0	29.0	26.0	260.0	45.0	706741	708331	708374	**
DN080/DN032*	85.0	81.0	35.0	32.0	260.0	45.0	702790	708332	708375	**
DN080/DN040	85.0	81.0	41.0	38.0	260.0	45.0	702792	708333	708376	**
DN080/DN050	85.0	81.0	53.0	50.0	260.0	46.0	702794	708334	708377	**
DN080/DN065	85.0	81.0	70.0	66.0	260.0	47.5	702796	708335	708378	**

*) nicht in der DIN-Norm enthalten | non-standard

***) auf Anfrage | on request



5.4 STERI-TKR® / HQ-TKR® DIN 11865-TK

zusätzliche Oberflächenqualitäten analog Seite | additional surface qualities analog page 118

DIN	A	B	A1	B1	C	D	STERI-line®			HQ-line®
							MB	K400	e-pol.	
DN100/DN010*	104.0	100.0	13.0	10.0	310.0	55.5	711793	709292	709293	**
DN100/DN015*	104.0	100.0	19.0	16.0	310.0	55.5	704469	708336	708379	**
DN100/DN020*	104.0	100.0	23.0	20.0	310.0	55.5	702798	708337	708380	**
DN100/DN025*	104.0	100.0	29.0	26.0	310.0	55.5	702799	708338	708381	**
DN100/DN032*	104.0	100.0	35.0	32.0	310.0	55.5	702801	708339	708382	**
DN100/DN040*	104.0	100.0	41.0	38.0	310.0	55.5	702803	708340	708383	**
DN100/DN050	104.0	100.0	53.0	50.0	310.0	55.5	702805	708341	708384	**
DN100/DN065	104.0	100.0	70.0	66.0	310.0	57.0	702807	708342	708385	**
DN100/DN080	104.0	100.0	85.0	81.0	310.0	57.0	702809	708343	708386	**
DN125/DN065	129.0	125.0	70.0	66.0	375.0	69.5	711794	711795	711796	**
DN125/DN080	129.0	125.0	85.0	81.0	375.0	69.5	711797	711798	711799	**
DN125/DN100	129.0	125.0	104.0	100.0	375.0	70.5	711800	711801	711802	**
DN150/DN080	154.0	150.0	85.0	81.0	450.0	99.0	711803	711804	711805	**
DN150/DN100	154.0	150.0	104.0	100.0	450.0	100.0	711806	711807	711808	**
DN150/DN125	154.0	150.0	129.0	125.0	450.0	103.0	711809	711810	711811	**
DN200/DN100	204.0	200.0	104.0	100.0	600.0	108.0	711812	711813	711814	**
DN200/DN125	204.0	200.0	129.0	125.0	600.0	111.5	711815	711816	711817	**
DN200/DN150	204.0	200.0	154.0	150.0	600.0	115.0	711818	711819	711820	**

*) nicht in der DIN-Norm enthalten | non-standard

**) auf Anfrage | on request

ISO	A	B	A1	B1	C	D	STERI-line®			HQ-line®
							MB	K400	e-pol.	
DN010/DN008	17.2	14.0	13.5	10.3	68.0	10.1	702732	708387	708436	**
DN015/DN008	21.3	18.1	13.5	10.3	72.0	12.2	702733	708388	708437	**
DN015/DN010	21.3	18.1	17.2	14.0	72.0	12.2	702735	708389	708438	**
DN020/DN008	26.9	23.7	13.5	10.3	110.0	15.0	702736	708390	708439	**
DN020/DN010	26.9	23.7	17.2	14.0	110.0	15.0	702738	708391	708440	**
DN020/DN015	26.9	23.7	21.3	18.1	110.0	15.0	702740	708392	708441	**
DN025/DN008*	33.7	29.7	13.5	10.3	120.0	18.4	702741	708393	708442	**
DN025/DN010	33.7	29.7	17.2	14.0	120.0	18.4	702743	708394	708443	**
DN025/DN015	33.7	29.7	21.3	18.1	120.0	18.4	702745	708395	708444	**
DN025/DN020	33.7	29.7	26.9	23.7	120.0	18.4	702747	708396	708445	**
DN032/DN008*	42.4	38.4	13.5	10.3	130.0	22.7	702748	708397	708446	**
DN032/DN010*	42.4	38.4	17.2	14.0	130.0	22.7	702750	707275	708447	**
DN032/DN015	42.4	38.4	21.3	18.1	130.0	22.7	702752	708398	708448	**
DN032/DN020	42.4	38.4	26.9	23.7	130.0	22.7	702754	708399	708449	**
DN032/DN025	42.4	38.4	33.7	29.7	130.0	22.7	702756	708400	708450	**
DN040/DN008*	48.3	44.3	13.5	10.3	130.0	25.7	703529	708401	708451	**
DN040/DN010*	48.3	44.3	17.2	14.0	130.0	25.7	702758	708402	708452	**
DN040/DN015*	48.3	44.3	21.3	18.1	130.0	25.7	702760	708403	708453	**
DN040/DN020	48.3	44.3	26.9	23.7	130.0	25.7	702762	708404	708454	**
DN040/DN025	48.3	44.3	33.7	29.7	130.0	25.7	702764	708405	708455	**
DN040/DN032	48.3	44.3	42.4	38.4	130.0	26.2	702766	708406	708456	**
DN050/DN008*	60.3	56.3	13.5	10.3	180.0	31.7	703019	708407	708457	**
DN050/DN010*	60.3	56.3	17.2	14.0	180.0	31.7	703815	708408	708458	**
DN050/DN015*	60.3	56.3	21.3	18.1	180.0	31.7	702768	708409	708459	**
DN050/DN020*	60.3	56.3	26.9	23.7	180.0	31.7	702770	708410	708460	**
DN050/DN025	60.3	56.3	33.7	29.7	180.0	31.7	702772	708411	708461	**
DN050/DN032	60.3	56.3	42.4	38.4	180.0	32.2	702775	708412	708462	**
DN050/DN040	60.3	56.3	48.3	44.3	180.0	32.7	702777	708413	708463	**
DN065/DN008*	76.1	72.1	13.5	10.3	220.0	40.1	705964	708414	708464	**
DN065/DN010*	76.1	72.1	17.2	14.0	220.0	40.1	708347	705963	708465	**
DN065/DN015*	76.1	72.1	21.3	18.1	220.0	40.1	702778	708415	708466	**
DN065/DN020*	76.1	72.1	26.9	23.7	220.0	40.1	702780	708416	708467	**



ISO	A	B	A1	B1	C	D	STERI-line®			HQ-line®
							MB	K400	e-pol.	
DN065/DN025*	76.1	72.1	33.7	29.7	220.0	40.1	702782	708417	708468	**
DN065/DN032	76.1	72.1	42.4	38.4	220.0	40.1	702784	708418	708469	**
DN065/DN040	76.1	72.1	48.3	44.3	220.0	40.6	702786	708419	708470	**
DN065/DN050	76.1	72.1	60.3	56.3	220.0	41.6	702788	708420	708471	**
DN080/DN008*	88.9	84.3	13.5	10.3	260.0	47.0	711821	709241	709075	**
DN080/DN010*	88.9	84.3	17.2	14.0	260.0	47.0	711822	711823	711824	**
DN080/DN015*	88.9	84.3	21.3	18.1	260.0	47.0	708349	708421	706778	**
DN080/DN020*	88.9	84.3	26.9	23.7	260.0	47.0	708350	706779	708472	**
DN080/DN025*	88.9	84.3	33.7	29.7	260.0	47.0	702789	708422	708473	**
DN080/DN032*	88.9	84.3	42.4	38.4	260.0	47.0	702791	708423	708474	**
DN080/DN040	88.9	84.3	48.3	44.3	260.0	47.0	702793	708424	708475	**
DN080/DN050	88.9	84.3	60.3	56.3	260.0	48.0	702795	708425	708476	**
DN080/DN065	88.9	84.3	76.1	72.1	260.0	49.5	702797	708426	708477	**
DN100/DN008*	114.3	109.7	13.5	10.3	320.0	60.7	711825	711826	711827	**
DN100/DN010*	114.3	109.7	17.2	14.0	320.0	60.7	707856	708427	707859	**
DN100/DN015*	114.3	109.7	21.3	18.1	320.0	60.7	707857	708428	707860	**
DN100/DN020*	114.3	109.7	26.9	23.7	320.0	60.7	707858	708429	707861	**
DN100/DN025*	114.3	109.7	33.7	29.7	320.0	60.7	702800	708430	708478	**
DN100/DN032*	114.3	109.7	42.4	38.4	320.0	60.7	702802	708431	708479	**
DN100/DN040*	114.3	109.7	48.3	44.3	320.0	60.7	702804	708432	708480	**
DN100/DN050	114.3	109.7	60.3	56.3	320.0	60.7	702806	708433	708481	**
DN100/DN065	114.3	109.7	76.1	72.1	320.0	62.2	702808	708434	708482	**
DN100/DN080	114.3	109.7	88.9	84.3	320.0	62.2	702810	708435	708483	**
DN125/DN065	139.7	134.5	76.1	72.1	400.0	74.9	711828	711829	708989	**
DN125/DN080	139.7	134.5	88.9	84.3	400.0	74.9	711830	711831	708990	**
DN125/DN100	139.7	134.5	114.3	109.7	400.0	75.9	711832	711833	708991	**
DN150/DN080	168.3	163.1	88.9	84.3	500.0	89.2	711834	711835	709070	**
DN150/DN100	168.3	163.1	114.3	109.7	500.0	90.2	707980	711836	711837	**
DN150/DN125	168.3	163.1	139.7	134.5	500.0	94.2	711838	711839	711840	**
DN200/DN100	219.1	213.9	114.3	109.7	600.0	115.6	711841	711842	711843	**
DN200/DN125	219.1	213.9	139.7	134.5	600.0	119.6	711844	711845	711846	**
DN200/DN150	219.1	213.9	168.3	163.1	600.0	122.6	711847	711848	711849	**

ASME BPE	A	B	A1	B1	C	D	STERI-line®			HQ-line®
							MB	K400	e-pol.	
DN ¾"/DN ½"	19.05	15.75	12.7	9.4	101.6	11.0	703237	708545	708566	**
DN 1"/DN ½"	25.4	22.1	12.7	9.4	108.0	14.2	703435	708546	708567	**
DN 1"/DN ¾"	25.4	22.1	19.05	15.75	108.0	14.2	704571	708547	708568	**
DN 1½"/DN ½"*	38.1	34.8	12.7	9.4	120.6	20.6	702812	708548	708569	**
DN 1½"/DN ¾"	38.1	34.8	19.05	15.75	120.6	20.6	703463	708549	708570	**
DN 1½"/DN 1"	38.1	34.8	25.4	22.1	120.6	20.6	702816	708550	708571	**
DN 2"/DN ½"*	50.8	47.5	12.7	9.4	146.0	26.9	703434	708551	708572	**
DN 2"/DN ¾"*	50.8	47.5	19.05	15.75	146.0	26.9	703433	708552	708573	**
DN 2"/DN 1"	50.8	47.5	25.4	22.1	146.0	26.9	702818	708553	708574	**
DN 2"/DN 1½"	50.8	47.5	38.1	34.8	146.0	27.4	702814	708554	708575	**
DN 2½"/DN ¾"*	63.5	60.2	19.05	15.75	158.8	33.8	706448	708556	708577	**
DN 2½"/DN 1"*	63.5	60.2	25.4	22.1	158.8	33.8	704573	708557	708578	**
DN 2½"/DN 1½"	63.5	60.2	38.1	34.8	158.8	33.8	704574	708558	708579	**
DN 2½"/DN 2"	63.5	60.2	50.8	47.5	158.8	35.3	704576	708559	708580	**
DN 3"/DN 1½"	76.2	72.9	38.1	34.8	171.4	40.1	705827	708560	708581	**
DN 3"/DN 2"	76.2	72.9	50.8	47.5	171.4	41.6	705828	708561	708582	**
DN 3"/DN 2½"	76.2	72.9	63.5	60.2	171.4	41.6	705829	708562	708583	**
DN 4"/DN 2"	101.6	97.38	50.8	47.5	209.6	54.3	705830	708563	708584	**
DN 4"/DN 2½"	101.6	97.38	63.5	60.2	209.6	54.3	705831	708564	708585	**
DN 4"/DN 3"	101.6	97.38	76.2	72.9	209.6	55.8	705832	708565	708586	**
DN 6"/DN 4"	152.4	146.86	101.6	97.38	285.8	83.1	711854	711855	711856	**