



Legende

- A Innendurchmesser
- B Schaft-Durchmesser
- C Gesamtlänge
- E Bandbreite / -stärke
- G Schraubengröße

Werkstoffe

1.4301

weitere Werkstoffe auf Anfrage

Oberflächenbeschaffenheit

elektropoliert

Key

- internal diameter
- shank diameter
- total length
- strip width / -strength
- bolt size

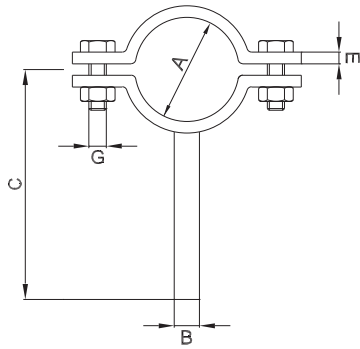
Materials

304

further materials on request

Surface condition

electropolished



weitere Abmessungen auf Anfrage | further dimensions on request

DIN	Abmessung dimension	A	B	C	E	G	1.4301 304			
DN010	12.0 x 1.0	12.0	8.0	64.0	20.0 x 3.0	M6	705550			
DN010	13.0 x 1.5	12.0	8.0	64.0	20.0 x 3.0	M6	705550			
DN015	19.0 x 1.5	18.0	8.0	67.0	20.0 x 3.0	M6	705551			
DN020	23.0 x 1.5	22.0	8.0	69.0	20.0 x 3.0	M6	705552			
DN025	29.0 x 1.5	28.0	10.0	72.0	20.0 x 3.0	M6	705553			
DN032	35.0 x 1.5	34.0	10.0	75.0	20.0 x 3.0	M6	705554			
DN040	41.0 x 1.5	40.0	10.0	78.0	20.0 x 3.0	M6	705555			
DN050	53.0 x 1.5	52.0	12.0	84.0	20.0 x 3.0	M6	705556			
DN065	70.0 x 2.0	70.0	12.0	93.0	20.0 x 3.0	M6	705557			
DN080	85.0 x 2.0	85.0	12.0	100.5	25.0 x 3.0	M6	705558			
DN100	104.0 x 2.0	104.0	12.0	110.0	25.0 x 3.0	M6	705559			
DN125	129.0 x 2.0	129.0	16.0	140.0	30.0 x 3.0	M8	705560			
DN150	154.0 x 2.0	154.0	16.0	180.0	30.0 x 3.0	M8	705561			

ISO	Abmessung dimension	A	B	C	E	G	1.4301 304			
DN008	13.5 x 1.6	12.0	8.0	64.0	20.0 x 3.0	M6	705562			
DN010	17.2 x 1.6	18.0	8.0	67.0	20.0 x 3.0	M6	705563			
DN015	21.3 x 1.6	21.3/22.0	8.0	69.0	20.0 x 3.0	M6	705564			
DN020	26.9 x 1.6	26.9	10.0	71.0	20.0 x 3.0	M6	705565			
DN025	33.7 x 2.0	33.7	10.0	75.0	20.0 x 3.0	M6	705566			
DN032	42.4 x 2.0	42.4	10.0	79.0	20.0 x 3.0	M6	705567			
DN040	48.3 x 2.0	48.3	10.0	82.0	20.0 x 3.0	M6	705568			
DN050	60.3 x 2.0	60.3	12.0	88.0	20.0 x 3.0	M6	705569			
DN065	76.1 x 2.0	76.2	12.0	96.0	25.0 x 3.0	M6	705570			
DN080	88.9 x 2.3	88.9	12.0	103.0	25.0 x 3.0	M6	705571			
DN100	114.3 x 2.3	114.3	12.0	115.0	25.0 x 3.0	M6	705572			
DN125	139.7 x 2.6	139.7	16.0	146.0	30.0 x 3.0	M8	705573			
DN150	168.3 x 2.6	168.3	16.0	188.0	40.0 x 4.0	M8	712020			

ASME BPE	Abmessung dimension	A	B	C	E	G	1.4301 304			
DN 1/2"	12.7 x 1.65	12.0	8.0	64.0	20.0 x 3.0	M6	705574			
DN 3/4"	19.05 x 1.65	18.0	8.0	67.0	20.0 x 3.0	M6	705575			
DN 1"	25.4 x 1.65	25.4	10.0	71.0	20.0 x 3.0	M6	705576			
DN 1 1/2"	38.1 x 1.65	38.1	10.0	77.0	20.0 x 3.0	M6	705577			
DN 2"	50.8 x 1.65	50.8	12.0	84.0	20.0 x 3.0	M6	705578			
DN 2 1/2"	63.5 x 1.65	63.5	12.0	90.0	20.0 x 3.0	M6	705579			
DN 3"	76.2 x 1.65	76.2	12.0	96.0	25.0 x 3.0	M6	705580			
DN 4"	101.6 x 2.11	101.6	12.0	109.0	25.0 x 3.0	M6	705581			